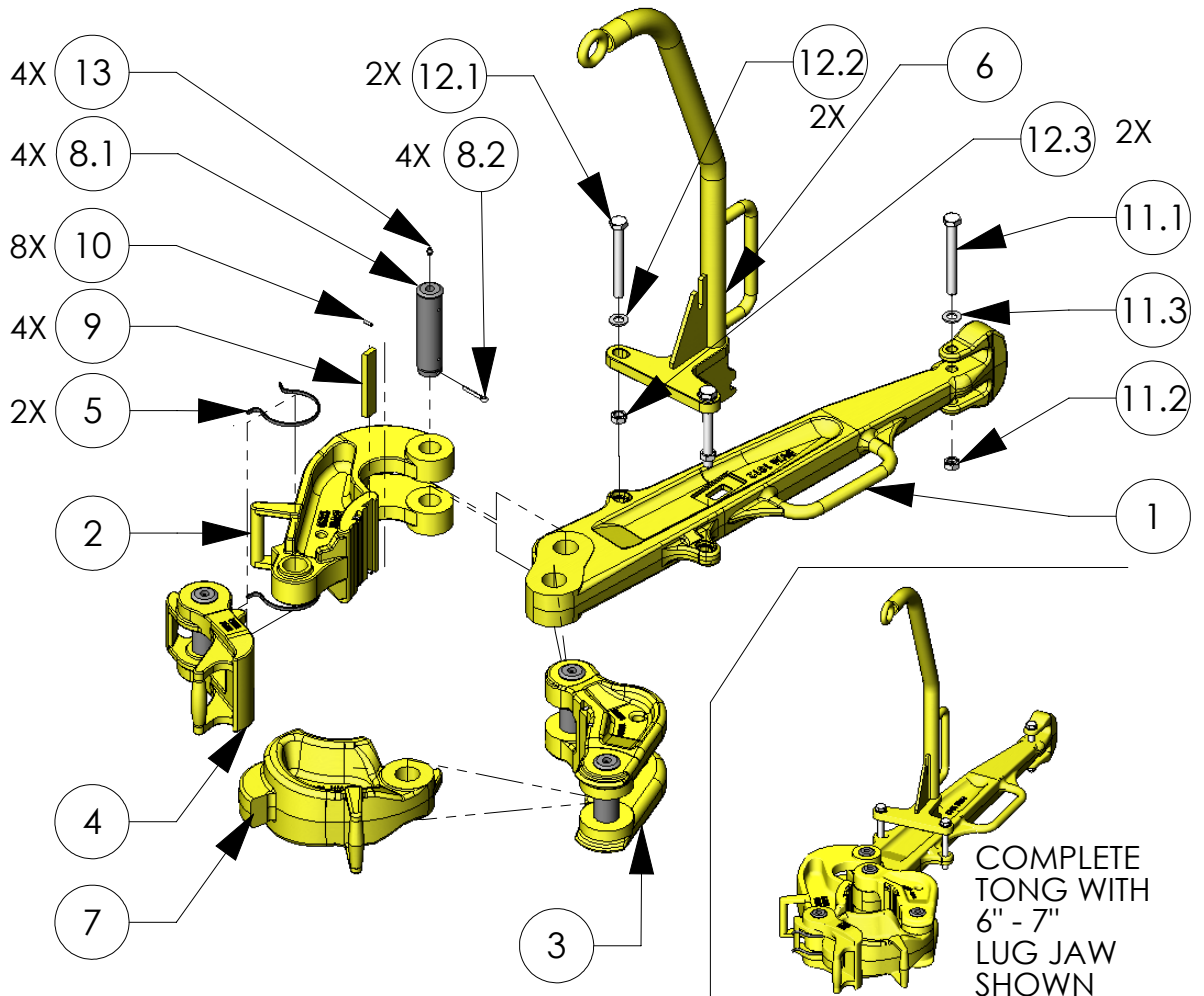


# BVM H TONG



ITEM NO	PART NO	SHOWN QTY	DESCRIPTION	WEIGHT (lbs)	TORQUE (ft/lbs)
--	1800	--	"TYPE H" TONG COMPLETE with LEVER & HANGER, LESS LUG JAW FOR SIZE 3 1/2" - 13 3/8"	472.0	80,000
1	1812	1	50" LEVER "TYPE H"	169.9	--
2	1820	1	LONG JAW "TYPE H"	113.0	--
3	1830	1	SHORT JAW "TYPE H"	86.3	--
4	1850	1	LATCH "TYPE H"	39.8	--
5	1851	2	LATCH SPRING "TYPE H"	0.2	--
6	1360	1	HANGER "TYPE H"	30.0	--
7	1871		LUG JAW 3 1/2" - 4 1/4" "TYPE H"	55.7	80,000
	1872		LUG JAW 4" - 5 1/4" "TYPE H"	52.6	80,000
	1873		LUG JAW 5" - 6" "TYPE H"	66.1	80,000
	1874	1	LUG JAW 6" - 7" "TYPE H"	81.2	80,000
	1875		LUG JAW 7" - 9" "TYPE H"	74.2	80,000
	1876		LUG JAW 9" - 10 3/4" "TYPE H"	87.0	80,000
	1877		LUG JAW 10 3/4" - 11 3/4" "TYPE H"	105.0	60,000
	1878-1		LUG JAW 12 3/4" "TYPE H"	123.5	
	1878		LUG JAW 13 3/8" "TYPE H"	113.2	40,000
8	1880	4	HINGE PIN w/COTTER PIN	--	--
8.1	1880-1		HINGE PIN	4.4	--
8.2	30040-18-0		COTTER PIN	0.0	--
9	196578	4	TONG DIE	0.8	--
10	40040-06-0	8	DIE RETAINER PINS	0.1	--
11	1390		TONG LINE RETAINER BOLT, NUT, & WASHER	--	--
11.1	1412C-54-5	1	BOLT	1.0	--
11.2	6212C-00-5	1	LOCKNUT	0.1	--
11.3	22120-00-0	1	FLAT WASHER	0.1	--
12	1365		HANGER ADJUSTMENT BOLT, NUT, & WASHER	--	--
12.1	1412C-54-5	2	BOLT	1.0	--
12.2	6212C-00-5	2	LOCKNUT	0.1	--
12.3	22120-00-0	2	FLAT WASHER	0.1	--
13	940308-1	4	GREASE FITTINGS	0.1	--

**BVM CORPORATION**  
 430 S. NAVAJO STREET, DENVER CO 80223  
 PHONE: 303-975-1402; FAX: 303-975-0981  
 www.bvmcorp.com; sales@bvmcorp.com