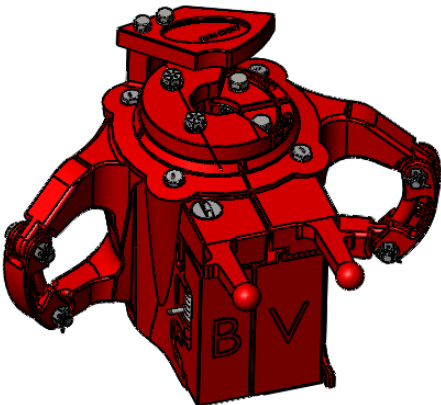
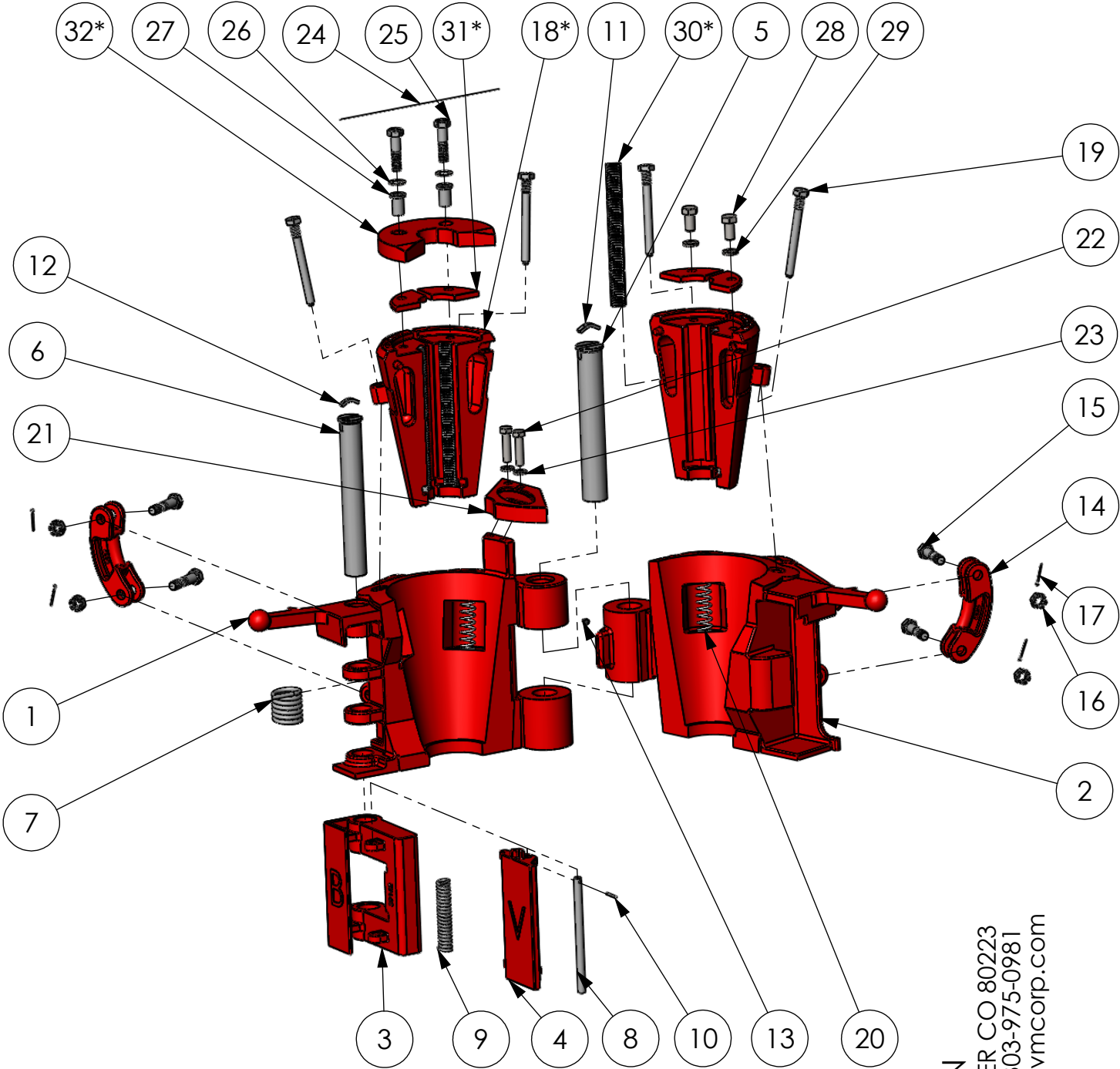


# BVM HYT ELEVATOR

HYT Elevators are produced from cast alloy heat treated steel and have a working capacity of 150 Ton.



**BVM CORPORATION**  
 430 S. NAVAJO STREET, DENVER CO 80223  
 PHONE: 303-975-1402; FAX: 303-975-0981  
 www.bvmcorp.com; sales@bvmcorp.com

# BVM HYT ELEVATOR

ITEM NO.	PART NUMBER	DESCRIPTION	QTY.
1	39284L	BODY	1
2	39284R	DOOR	1
3	39162	LATCH	1
4	39161	LATCH LOCK	1
5	39239	HINGE PIN	1
6	39238	LATCH PIN	1
7	39240	LATCH SPRING	1
8	39251	LATCH LOCK PIN	1
9	39241	LATCH LOCK SPRING	1
10	40030-12-0	ROLL PIN	1
11	39253	HINGE PIN RETAINER	1
12	39254	LATCH PIN RETAINER	1
13	940308-1	GREASE FITTING	1
14	9519	LINK BLOCK	2
15	8145	LINK BLOCK BOLT	4
16	6812C-00-5	LINK BLOCK NUT	4
17	30AB0-14-0	COTTER PIN	4
18*	39175	SLIP	4
19	52321	SLIP BOLT	4
20	52539-1	SLIP SPRING	4
21	51090	GUIDE PLATE	1
22	1410C-20-8	HFBOLT 0.625-11x2.5x1.5-N	2
23	20100-00-0	Regular Lock Washer 0.625	2
24	947879	LOCKWIRE	1
25	939098-96	HEX HEAD CAPSCREW	2
26	22120-00-0	Narrow Flat Washer 0.75	2
27	51089	SETTING RING BUSHING	2
28	1412C-12-8	HHBOLT 0.75-10x1.5x1.5-N	2
29	20120-00-0	Regular Lock Washer 0.75	2
30*	29255	INSERTS	16
31*	39246	INSERT RETAINER	4
32*	39214-1	SLIP SETTING RING	1

ITEM NO.	P/N	DESCRIPTION	QTY.
2 7/8" X 2 3/8" SLIP SIZE			
18	39175	SLIP	4
29	29255	INSERT	16
30	39246C	INSERT RETAINER	4
31	39214-1C	SLIP SETTING RING	1
2 7/8" SLIP SIZE			
18	39175	SLIP	4
29	24773	INSERT	16
30	39246C	INSERT RETAINER	4
31	39214-2	SLIP SETTING RING	1
3 1/2" X 2 7/8" SLIP SIZE			
18	39174	SLIP	4
29	30358	INSERT	32
30	39247	INSERT RETAINER	4
31	39214-2	SLIP SETTING RING	1
3 1/2" SLIP SIZE			
18	39174	SLIP	4
29	24774	INSERT	32
30	39247	INSERT RETAINER	4
31	39214-3	SLIP SETTING RING	1

\* SEE NEXT TABLE FOR DIFFERENT SIZES