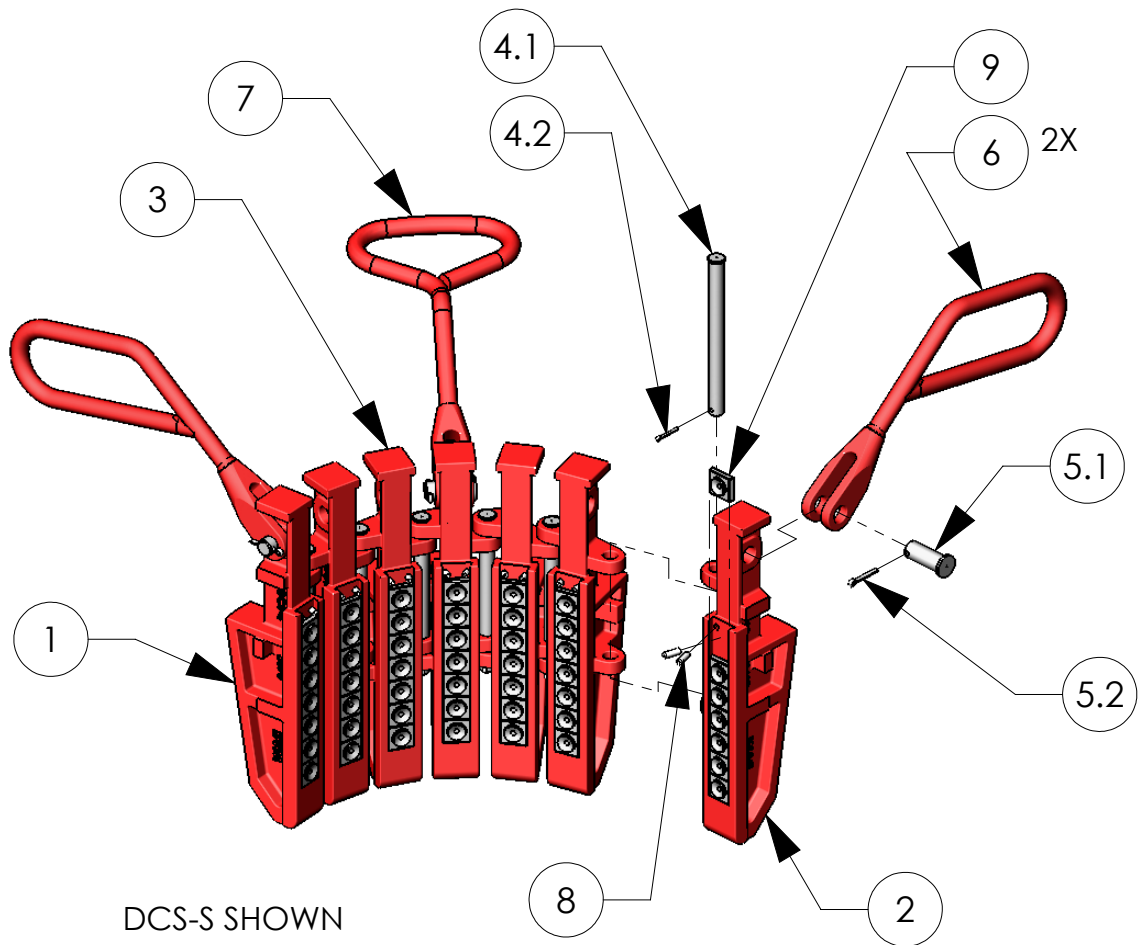
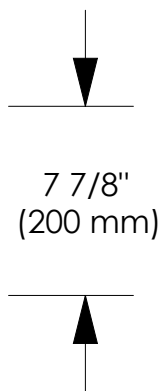
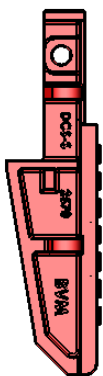


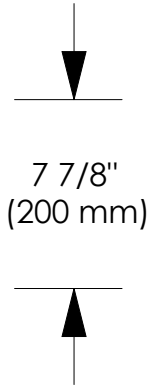
BVM TYPE DCS DRILL COLLAR SLIPS



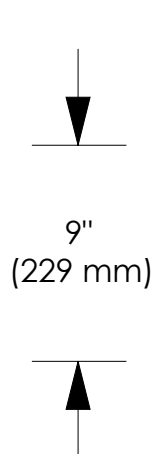
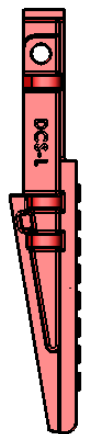
DCS-S
RANGE
3" - 4-7/8"



DCS-R
RANGE
4-1/2" - 7"



DCS-L
RANGE
5-1/2" - 14"



BVM CORPORATION
430 S. NAVAJO STREET, DENVER CO 80223
PHONE: 303-975-1402; FAX: 303-975-0981
www.bvmcorp.com; sales@bvmcorp.com

BVM TYPE DCS DRILL COLLAR SLIPS

PARTS LIST

| ITEM NO. | SLIP TYP | DCS-S | | DCS-R | | DCS-L | |
|----------|-------------------------|------------|--------------|------------|--------------|------------|--------------|
| | DESCRIPTION | P/N | WEIGHT (lbs) | P/N | WEIGHT (lbs) | P/N | WEIGHT (lbs) |
| 1 | RIGHT END SEGMENT | 2568 | 11.4 | 2554 | 10.4 | 2510 | 11.1 |
| 2 | LEFT END SEGMENT | 2569 | 11.4 | 2555 | 10.4 | 2511 | 11.1 |
| 3 | INTERMEDIATE SEGEMENT | 2570 | 11.7 | 2556 | 10.7 | 2512 | 11.6 |
| 4 | HINGE PIN w/COTTER PIN | 2525 | -- | 2525 | -- | 2520 | -- |
| 4.1 | HINGE PIN | 2525-1 | 0.7 | 2525-1 | 0.7 | 2520-1 | 0.7 |
| 4.2 | COTTER PIN | 30020-08-0 | 0.1 | 30020-08-0 | 0.1 | 30020-08-0 | 0.1 |
| 5 | HANDLE PIN w/COTTER PIN | 3769 | -- | 3769 | -- | 3769 | -- |
| 5.1 | HANDLE PIN | 3769-1 | 0.3 | 3769-1 | 0.3 | 3769-1 | 0.3 |
| 5.2 | COTTER PIN | 30030-10-0 | 0.1 | 30030-10-0 | 0.1 | 30030-10-0 | 0.1 |
| 6 | HANDLE - SIDES | 3765 | 4.0 | 3765 | 4.0 | 3765 | 4.0 |
| 7 | HANDLE - CENTER | 3766 | 4.4 | 3766 | 4.4 | 3766 | 4.4 |
| 8 | ROLL PIN | 40040-06-0 | 0.1 | 40040-06-0 | 0.1 | 40040-06-0 | 0.1 |
| 9 | CIRCULAR BUTTON | * | -- | * | -- | * | -- |

DCS - MULTI-SEGMENT DRILL COLLAR SLIPS

| SLIP TYPE | DRILL COLLAR OD (in) | P/N, SLIP COMPLETE | WEIGHT COMPLETE (lbs) | TOTAL SEGMENTS | TOTAL HINGE PINS | USE IN INSERT BOWL | HANDLES | BUTTONS PER SLIP |
|-----------|----------------------|--------------------|-----------------------|----------------|------------------|--------------------------|---------|------------------|
| DCS-S | 3 - 4 | 2572 | 112 | 7 | 6 | No.3 Regular or Extended | 3 | 7 |
| | 4 - 4-7/8 | 2573 | 103 | 7 | 6 | No.3 Regular or Extended | | |
| DCS-R | 4-1/2 - 6 | 2552 | 120 | 9 | 8 | No.3 Regular or Extended | 3 | 7 |
| | 5-1/2 - 7 | 2550 | 112 | 9 | 8 | No.3 Regular or Extended | | |
| DCS-L | 5-1/2 - 7 | 2501 | 154 | 11 | 10 | No.3 Regular or Extended | 3 | 8 |
| | 6-3/4 - 8-1/4 | 2503 | 154 | 11 | 10 | No.3 Regular or Extended | | |
| | 8 - 9-1/2 | 2507 | 173 | 12 | 11 | No.3 Extended | | |
| | 8-1/2 - 10 | 2530 | 185 | 13 | 12 | No.2 | 4 | |
| | 9-1/4 - 11-1/4 | 2508 | 198 | 14 | 13 | No.2 | | |
| | 11 - 12-3/4 | 2534 | 213 | 17 | 16 | No.1 | | |
| | 12 - 14 | 2536 | 207 | 17 | 16 | No.1 | | |

Circular Buttons for DCS Slips

| SLIP SET | DRILL COLLAR OD (in) | P/N | WEIGHT (lbs) | QTY TOTAL |
|----------|----------------------|----------|--------------|-----------|
| DCS-S | 3 - 4 | 2628-49 | 13 | 49 |
| | 4 - 4-7/8 | 2620-49 | 8 | 49 |
| DCS-R | 4-1/2 - 6 | 2628-63 | 16 | 63 |
| | 5-1/2 - 7 | 2620-63 | 11 | 63 |
| DCS-L | 5-1/2 - 7 | 2513-88 | 22 | 88 |
| | 6-3/4 - 8-1/4 | 2630-88 | 15 | 88 |
| | 8 - 9-1/2 | 2630-96 | 16 | 96 |
| | 8-1/2 - 10 | 2627-104 | 26 | 104 |
| | 9-1/4 - 11-1/4 | 2630-112 | 19 | 112 |
| | 11 - 12-3/4 | 2625-136 | 13 | 136 |
| | 12 - 14 | 2630-136 | 16 | 136 |