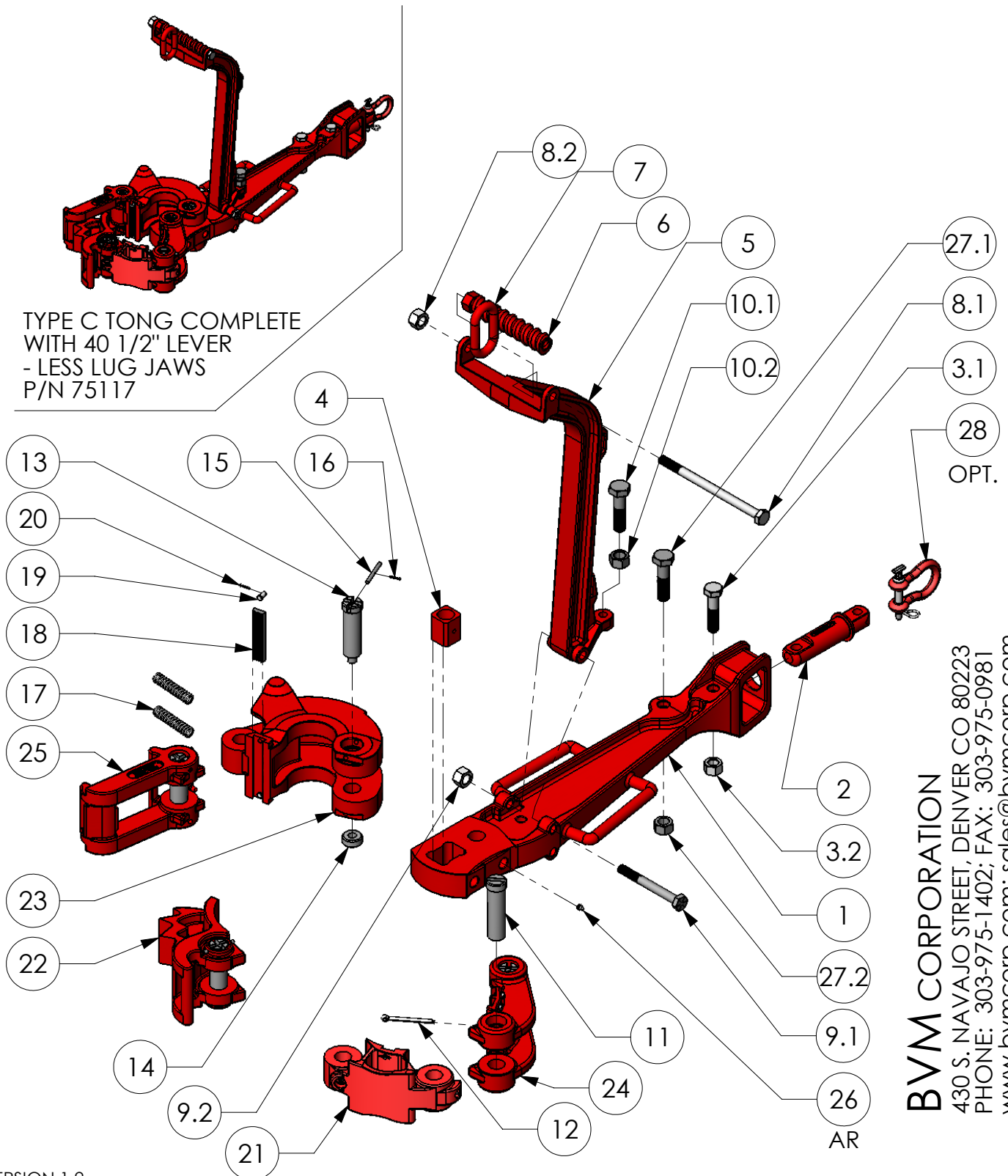


BVM MANUAL TYPE "C" TONG 35,000 ft/lbs TORQUE

The BVM Type "C" Tong covers drill pipe or casing sizes from 2 3/8" through 10 3/4" OD and is mostly used on smaller rigs. The new rugged latch design makes the "C" Tong stronger than other models and also can be ordered with an optional 30 7/8" lever, where space is a problem. The tong is made from alloy steel, heat treated and magnetic particle inspected. All specifications are certified.



BVM CORPORATION
 430 S. NAVAJO STREET, DENVER CO 80223
 PHONE: 303-975-1402; FAX: 303-975-0981
 www.bvmcorp.com; sales@bvmcorp.com

BVM MANUAL TYPE "C" TONG 35,000 ft/lbs TORQUE

ITEM NO.	DESCRIPTION	QTY REQ.	PART NO.	WEIGHT EACH (lbs)
--	TYPE C TONG COMPLETE WITH 40 1/2" LEVER - LESS LUG JAWS	--	75117	276.0
--	LEVER ASSEMBLY	--	75180-1	--
1	40 1/2" LEVER	1	75180-A	86.9
	30 7/8" LEVER		75180-B	
2	TONG LINE PIN		67269	6.9
3	TONG BOLT & NUT	1	75182	--
3.1	BOLT	--	1414C-32-8	
3.2	LOCKNUT	--	6214C-00-8	0.1
4	LEVER PIN BLOCK	1	75183	1.5
--	HANGER ASSEMBLY	--		44.0
5	HANGER	1	67264	37.4
6	HANGER BALANCING SCREW	1	67258	3.0
7	SUSPENSION RING	1	67267	1.5
8	HANGER BALANCING BOLT & NUT	1	67266	--
8.1	BOLT	--	1412C-96-5	
8.2	LOCKNUT	--	6212C-00-5	0.1
9	HANGER BOLT, NUT & COTTER PIN	1		--
9.1	BOLT	--	1412C-56-5	
9.2	LOCKNUT	--	6212C-00-5	0.1
10	ADJUSTMENT BOLT & NUT	1	67268	--
10.1	BOLT	--	8014C-32-5	
10.2	NUT	--	6014C-00-5	0.1
11	HINGE PIN - REMOVABLE	1	75656	3.0
12	COTTER PIN	1	30060-30-0	0.1
13	HINGE PIN - THREADED	4	75657	2.8
14	HINGE PIN NUT	4	75658	0.4
15	HINGE PIN RETAINER PIN	4	67423	0.2
16	COTTER PIN	4	30020-06-0	0.1
17	LATCH SPRING	2	67429	0.1
18	TONG DIE	4	80401	1.0
19	CLEVIS PIN	AR	55060-06-0*	0.1
20	COTTER PIN	8	30020-06-0	0.1
--	LATCH JAW ASSEMBLY 7" TO 8 5/8"	--	75701-1	61.0
21	HINGE JAW 7" TO 8 5/8"	1	75702	25.9
22	LATCH LUG JAW 7" TO 8 5/8"	1	75941	33.8
--	LATCH JAW ASSEMBLY 9 5/8" TO 10 3/4"	--	75703-1	76.0
--	HINGE JAW 9 5/8" TO 10 3/4"	--	75704	35.1
--	LATCH LUG JAW 9 5/8" TO 10 3/4"	--	75799	39.3
--	LONG JAW ASSEMBLY - INCLUDES ITEMS 16, 17, 18, 21	--	75801-1	73.0
23	LONG JAW	1	75801	71.6
--	SHORT JAW ASSEMBLY - INCLUDES ITEMS 16, 17, 18, 22	--	75802-1	32.4
24	SHORT JAW	1	75802	31.0
25	LATCH	1	75699	24.9
--	LUG JAW 2 3/8" TO 3.668"	--	75728	25.6
--	LUG JAW 2 7/8" TO 4 1/4"	--	75727	27.7
--	LUG JAW 3 1/2" TO 5 1/4"	--	75939	32.7
--	LUG JAW 4 1/2" TO 6 1/2"	--	75943	42.2
--	LUG JAW 5 1/4" TO 7"	--	75940	55.0
26	GREASE FITTINGS	AR	940308-1	0.1
27	BOLT & NUT	1		--
27.1	BOLT	--	1416C-32-8	
27.2	LOCKNUT	--	6216C-00-8	0.1
28	CLEVIS ASSEMBLY OPTIONAL	--	45711	2.0

AR = AS REQUIRED

*=55060-06-0 OR 55060-08-0 DEPENDING ON CASTING