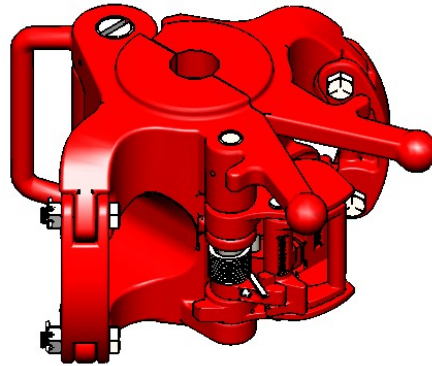
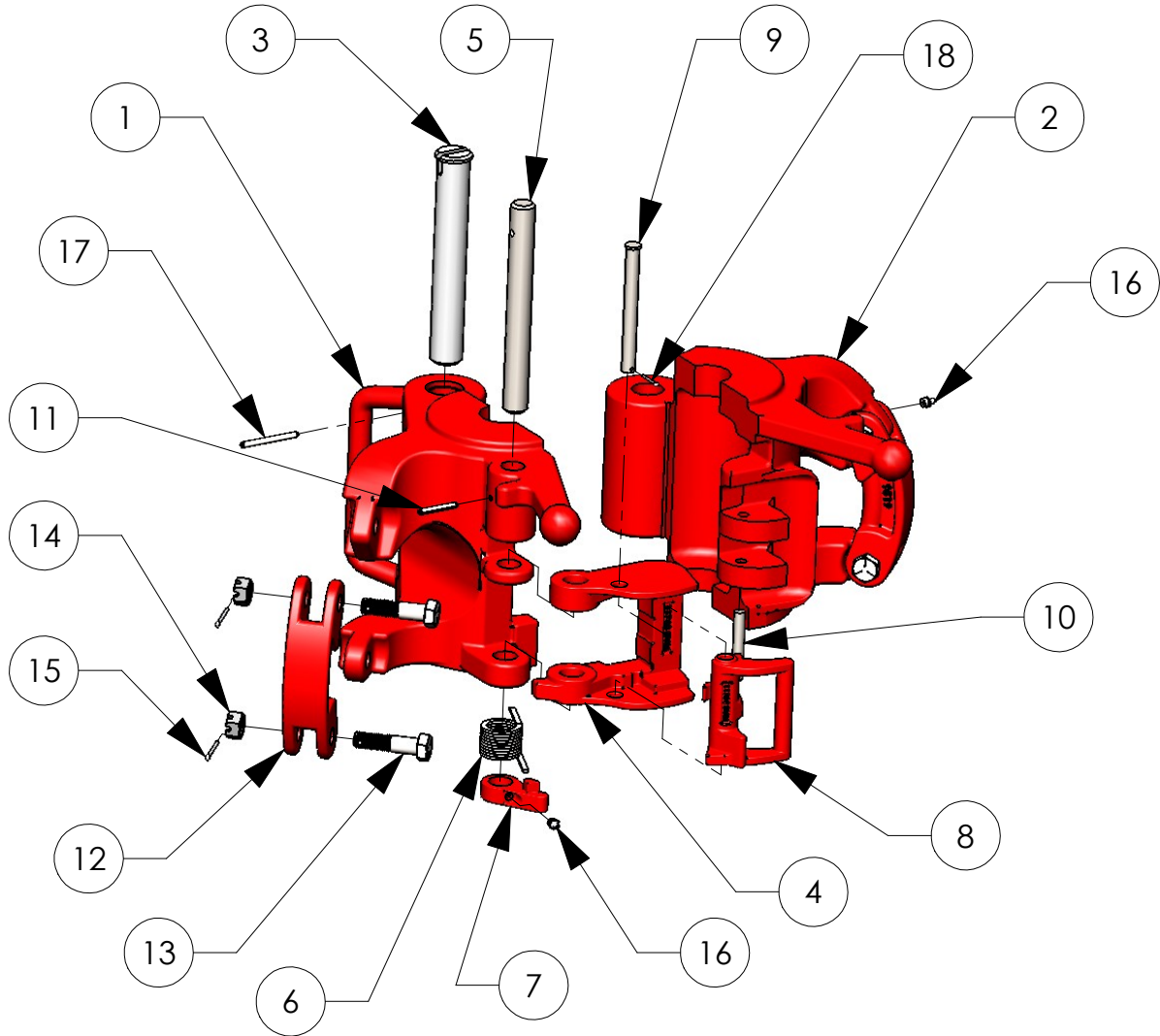


# BVM RA / MAA / AA ELEVATOR

BVM's RA-125, RA-150, MAA-250, and AA-350 are high collar type center latch elevators for API drill pipe, casing and tubing. They range in size from 2 3/8" through 7". BVM elevators are made from alloy steel, heat treated, load tested and magnetic particle inspected. All steel specifications are certified.



RA-150 SHOWN

# BVM RA / MAA / AA ELEVATOR

ITEM #	DESCRIPTION	QTY	RA 125 25462-**	RA 150 25459-**	MAA 250 13373-**	AA 350 12942-**
1	BODY	1	25462L	25459L	13373L	12942L
2	DOOR	1	25462R	25459R	13373R	12942R
3	HINGE PIN	1	525-3	12704-2^	13376-1	33998
4	LATCH	1	11111	11763	12945	31071
5	LATCH PIN	1	5389-2	5445-1	12980	33999
6	LATCH SPRING	1	25465	11766	12978	18416
7	LATCH CAM	1	11113-1	11581	12946	-
8	LATCH LOCK	1	11112	11764	12972	13152
9	LATCH LOCK PIN	1	11118	11759-1	13530	15101
10	DOOR LUG PIN	1	12529	12529	13531	13190
11	LATCH PIN RETAINER	1	40040-22-0	40040-16-0	40040-22-0	40050-32-0
12	LINK BLOCK	2	9519	9519	9519	9519
14	LINK BLOCK BOLT	4	8145	8145	8145	8145
15	LINK BLOCK NUT	4	6812C-00-5	6812C-00-5	6812C-00-5	6812C-00-5
16	COTTER PIN	4	30AB0-14-0	30AB0-14-0	30AB0-14-0	30AB0-14-0
17	GREASE FITTING	2	940308-1	940308-1	940308-1	940308-1
18	HINGE PIN RETAINER	1	40040-24-0	40040-24-0	40060-32-0	40060-40-0
19	LATCH LOCK PIN RETAINER	1	30020-08-0	30020-08-0	30020-08-0	-
20*	LATCH SPRING STOP	1	-	-	-	13185-1
21*	LATCH LOCK SPRING	1	-	-	-	13188

\* = Item not shown in illustration

\*\* = See Bore Code Charts

^ = Use P/N 12704-1 for S/N 32254 or lower

## RA/MAA/AA Elevator Bore Codes

Size (in)	Style	125 Ton	150 Ton	250 Ton	350 Ton
2 3/8"	Drill Collar w/ Lift Plug	25462-513	25459-513	-	-
2 3/8"	Plain (NU) Tubing	25462-158	25459-158	-	-
2 3/8"	Upset (EU) Tubing	25462-159	25459-159	-	-
2 1/2"	Drill Collar w/ Lift Plug	25462-201	25459-201	-	-
2 3/4"	Drill Collar w/ Lift Plug	25462-203	25459-203	-	-
2 7/8"	Drill Collar w/ Lift Plug	25462-824	25459-824	-	-
2 7/8"	Plain (NU) Tubing	25462-160	25459-160	-	-
2 7/8"	Upset (EU) Tubing	25462-161	25459-161	-	-
3"	Drill Collar w/ Lift Plug	25462-205	25459-205	-	-
3 1/8"	Drill Collar w/ Lift Plug	25462-206	25459-206	-	-
3 1/4"	Drill Collar w/ Lift Plug	25462-207	25459-207	-	-
3 3/8"	Drill Collar w/ Lift Plug	25462-795	25459-795	13373-795	-
3 1/2"	Drill Collar w/ Lift Plug	25462-209	25459-209	13373-209	-
3 1/2"	Drill Collar w/ Zip Lift Recess	25462-625	25459-625	-	-
3 1/2"	Plain (NU) Tubing	25462-162	25459-162	13373-162	-
3 1/2"	Upset (EU) Tubing	25462-163	25459-163	13373-163	-
3 3/4"	Drill Collar w/ Lift Plug	-	25459-211	13373-211	-
3 3/4"	Drill Collar w/ Zip Lift Recess	-	25459-582	-	-
3 7/8"	Drill Collar w/ Lift Plug	-	25459-763	13373-763	-
4"	Drill Collar w/ Lift Plug	-	25459-213	13373-213	-
4"	Plain (NU) Tubing	-	25459-164	13373-164	-
4"	Upset (EU) Tubing	-	25459-165	13373-165	-
4 1/8"	Drill Collar w/ Lift Plug	-	25459-519	13373-519	-
4 1/8"	Drill Collar w/ Zip Lift Recess	-	25459-177	13373-177	-
4 1/4"	Drill Collar w/ Lift Plug	-	25459-548	13373-548	-
4 1/2"	Casing	-	25459-129	13373-129	12942-129
4 1/2"	Drill Collar w/ Lift Plug	-	25459-215	13373-215	12942-215
4 1/2"	Drill Collar w/ Zip Lift Recess	-	25459-554	13373-554	-
4 1/2"	Plain (NU) Tubing	-	25459-166	13373-166	12942-166
4 1/2"	Upset (EU) Tubing	-	25459-167	13373-167	12942-167
4 3/4"	Casing	-	25459-130	13373-130	12942-130
4 3/4"	Drill Collar w/ Lift Plug	-	-	13373-354	12942-354
4 3/4"	Drill Collar w/ Zip Lift Recess	-	25459-435	13373-435	-
5"	Casing	-	-	13373-131	12942-131
5"	Drill Collar w/ Lift Plug	-	-	13373-552	12942-552
5 1/4"	Drill Collar w/ Lift Plug	-	-	13373-219	12942-219
5 1/4"	Drill Collar w/ Zip Lift Recess	-	-	13373-179	12942-179
5 1/2"	Casing	-	-	13373-132	12942-132
5 1/2"	Drill Collar w/ Lift Plug	-	-	13373-411	12942-411
5 1/2"	Drill Collar w/ Zip Lift Recess	-	-	13373-180	12942-180

## RA/MAA/AA Elevator Bore Codes

Size (in)	Style	125 Ton	150 Ton	250 Ton	350 Ton
5 3/4"	Casing	-	-	13373-133	12942-133
5 3/4"	Drill Collar w/ Lift Plug	-	-	13373-222	12942-222
5 3/4"	Drill Collar w/ Zip Lift Recess	-	-	13373-181	12942-181
6"	Casing	-	-	13373-134	12942-134
6"	Drill Collar w/ Lift Plug	-	-	13373-349	12942-349
6"	Drill Collar w/ Zip Lift Recess	-	-	13373-362	12942-362
6 1/4"	Drill Collar w/ Lift Plug	-	-	13373-348	12942-348
6 1/4"	Drill Collar w/ Zip Lift Recess	-	-	13373-337	12942-337
6 3/8"	Drill Collar w/ Lift Plug	-	-	13373-331	12942-331
6 1/2"	Drill Collar w/ Lift Plug	-	-	13373-332	12942-332
6 1/2"	Drill Collar w/ Zip Lift Recess	-	-	13373-373	12942-373
6 5/8"	Casing	-	-	13373-135	12942-135
6 3/4"	Drill Collar w/ Lift Plug	-	-	13373-338	-
6 3/4"	Drill Collar w/ Zip Lift Recess	-	-	13373-387	12942-387
7"	Casing	-	-	13373-136	-
7"	Drill Collar w/ Zip Lift Recess	-	-	13373-361	-