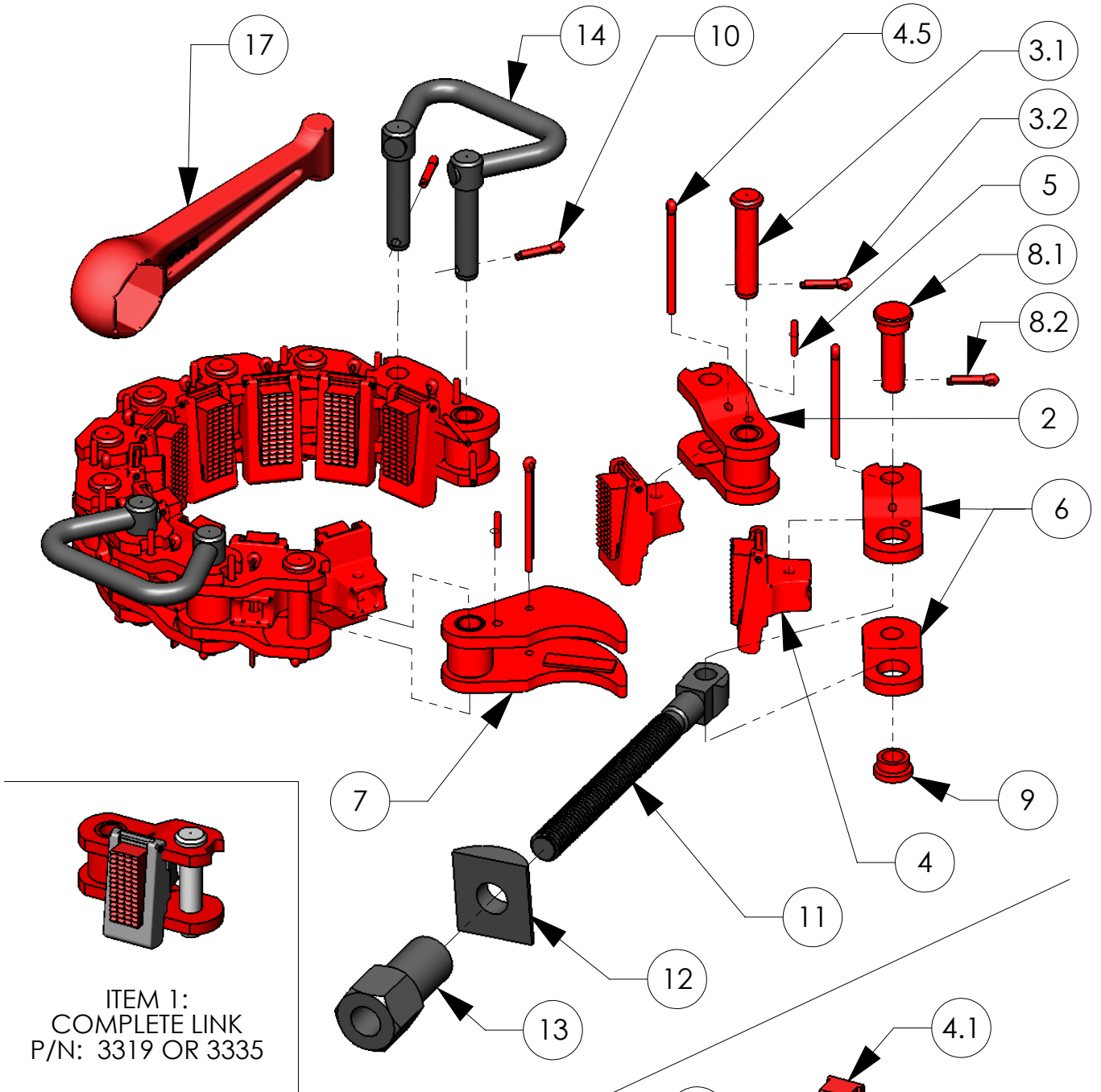
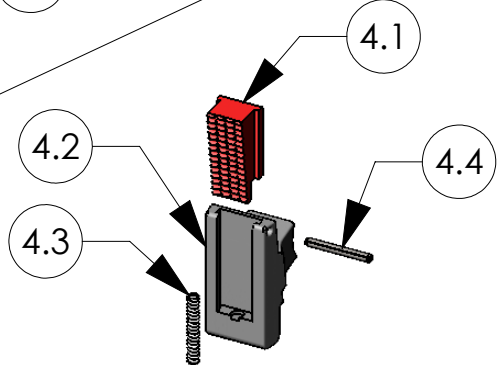


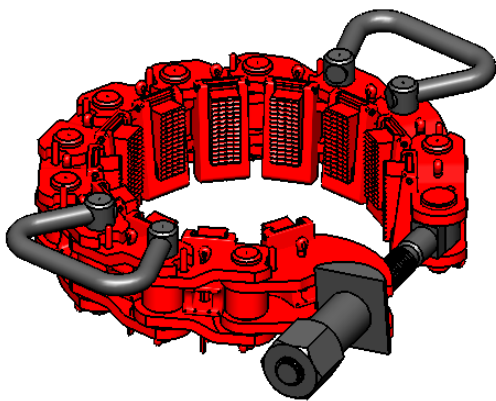
BVM MP SAFETY CLAMP



ITEM 1:
COMPLETE LINK
P/N: 3319 OR 3335



ITEM 4: CARRIER ASSEMBLY
P/N: 3324 OR 3325



33015 SHOWN
MP-R: 3 1/2" - 10 1/2"

BVM CORPORATION
430 S. NAVAJO STREET, DENVER CO 80223
PHONE: 303-975-1402; FAX: 303-975-0981
www.bvmcorp.com; sales@bvmcorp.com

BVM MP SAFETY CLAMP

ITEM NO.	PART NO.	DESCRIPTION	QTY	WEIGHT
1	3319	LINK, COMPLETE (includes items 2, 3, & 4)	AR	8.3
	3335	LINK, COMPLETE (for MP-S only) (includes items 2, 3, & 4) (See item 4)	AR	8.1
2	3306	LINK	AR	4.0
3	3307	INTERMEDIATE PIN w/COTTER PIN	AR	--
3.1	3307-1	INTERMEDIATE PIN	--	0.8
3.2	30050-10-0	COTTER PIN	--	0.1
4	3324	CARRIER ASSEMBLY, DIE (includes items 4.1 thru 4.5)	AR	3.7
	3325	CARRIER ASSEMBLY, DIE for MP-S (includes items 4.1 thru 4.5)	AR	3.5
4.1	3310	DIE GRIP	1	0.9
	3333	DIE GRIP for MP-S ONLY	1	1.5
4.2	3309	CARRIER DIE	1	2.6
4.3	3311	SPRING	1	0.1
4.4	40040-16-0	ROLL PIN	1	0.1
4.5	30050-32-0	COTTER PIN	1	0.1
5	50060-07-0	DOWEL PIN	AR	0.1
6	3318	BARS, LINK SIDE, PAIR	1**	3.1
7	3304	LINK, LATCH	1	3.7
	3321	LINK, LATCH for MP-XL only	1**	9.8
8	3308	SCREW PIN (w/COTTER PIN)	1**	--
8.1	3308-1	SCREW PIN	--	0.3
8.2	30050-10-0	COTTER PIN	--	0.1
9	3315	BUSHING, SCREW PIN	1**	0.3
10	30050-10-0	COTTER PIN (1 per link pin)	AR	0.1
11	3302	SCREW	1**	4.7
12	2714	THRUST WASHER	1**	2.0
13	3303	NUT	1**	4.4
14	3305	HANDLE (2 req: for MP-S, MP-R & MP-M; 4 req: for MP-L & MP-XL)	AR	4.5
15*	3316	HOLDDOWN LUG (2 req: for MP-S, MP-R & MP-M; 4 req: for MP-L & MP-XL)	OPT	5.5
16*	3317	LARGE HANDLE (2 req: for MP-S, MP-R & MP-M; 4 req: for MP-L & MP-XL)		4.2
17	3320	WRENCH	1	4.9
18*	3331	CASE	1	42.0
	3334	CASE for MP-XL only	1	84.0

RANGE (in.)	PART NO.	QTY		WEIGHT (lbs)	
		LINKS	GRIP DIES	WITH OUT CASE	WITH CASE
MP-S					
2 7/8 - 4 1/8	33030	6	8	83	125
4 5	33031	7	9	91	133
MP-R					
4 1/2 - 5 5/5	33011	6	8	81	123
5 1/2 - 7	33012	7	9	89	131
6 3/4 - 8 1/4	33013	8	10	97	139
8 - 9 1/4	33014	9	11	105	147
9 1/4 - 10 1/2	33015	10	12	113	155
MP-M					
10 1/2 - 11 1/2	33016	11	13	121	163
11 1/2 - 12 1/2	33017	12	14	129	171
12 1/2 - 13 5/8	33018	13	15	137	179
13 5/8 - 14 3/4	33019	14	16	145	187
14 3/4 - 15 7/8	33020	15	17	153	195
MP-L					
15 7/8 - 17	33021	16	18	172	215
17 - 18 1/2	33022	17	19	181	223
18 1/8 - 19 3/8	33023	18	20	189	231
MP-XL					
19 3/8 - 20 3/8	33024	19	20	196	280
20 3/8 - 21 1/2	33025	20	21	204	288
21 - 22 5/8	33032	21	22	212	296
22 5/8 - 23 3/4	33033	22	23	220	304
23 3/4 - 24 7/8	33034	23	24	228	312
24 7/8 - 26	33035	24	25	236	320
26 - 27 1/8	33036	25	26	244	328
29 3/8 - 30 1/2	33039	24	28	316	334
35 - 36 1/8	33044	32	33	300	340

AR = As Required OPT = Optional * = Not Shown ** = Double Quantity for 33039 & 33044