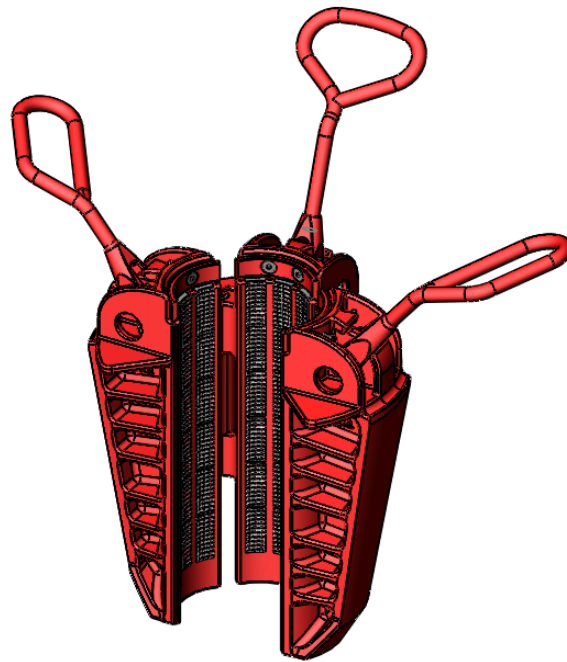
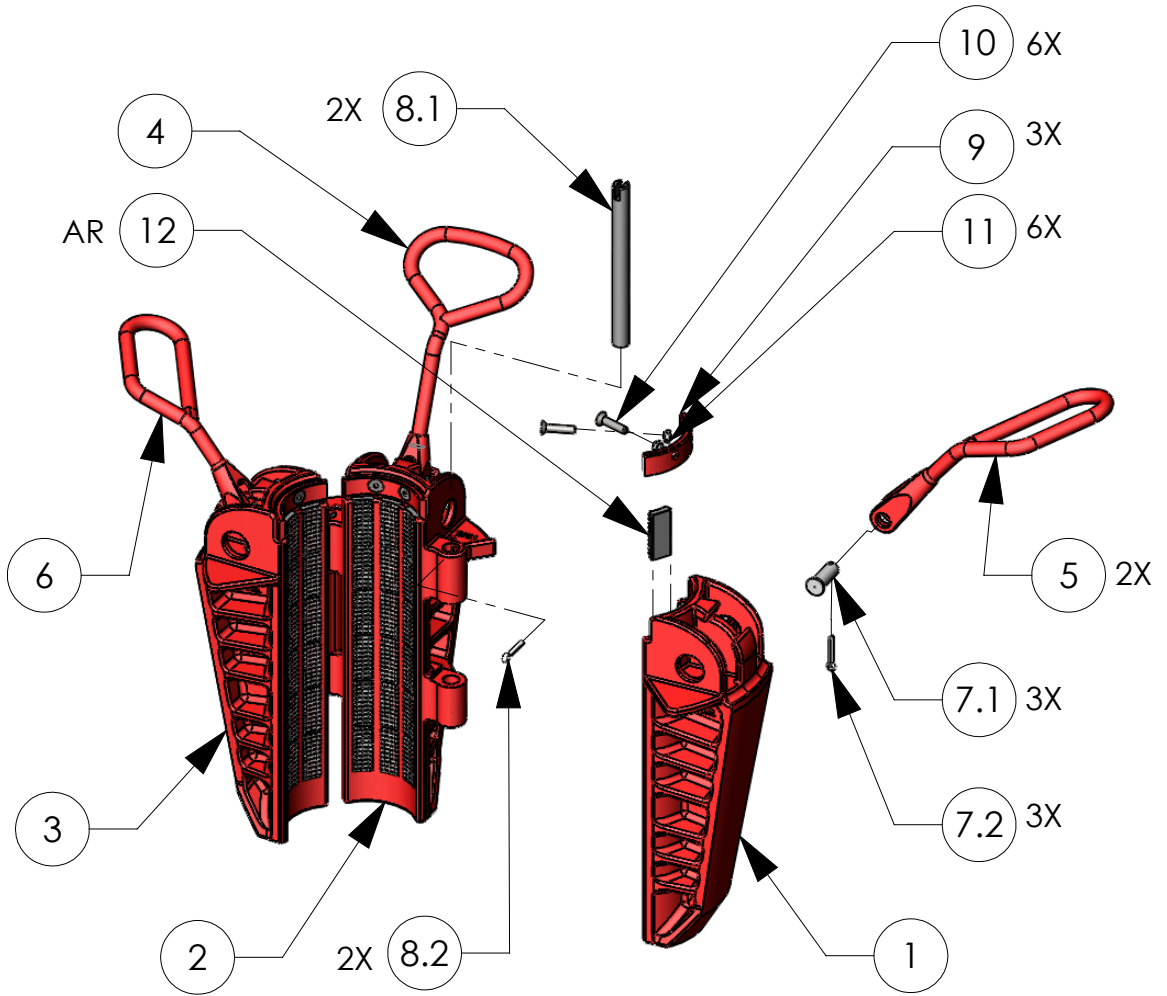


BVM ROTARY SLIPS



SDXL 5" SLIP
BODY SHOWN

BVM CORPORATION
 430 S. NAVAJO STREET, DENVER CO 80223
 PHONE: 303-975-1402; FAX: 303-975-0981
 www.bvmcorp.com; sales@bvmcorp.com

SDS - SHORT ROTARY SLIPS

SLIP BODY SIZES (in)			3 1/2		4 1/2	
ITEM NO.	DESCRIPTION	QTY	PART NO.	WEIGHT (lbs)	PART NO.	WEIGHT (lbs)
-	SLIP COMPLETE, LESS INSERTS	-	3906	95.0	3912	110.0
1	SLIP SEGMENT - RIGHT	1	3919	28.0	3922	37.0
2	SLIP SEGMENT - CENTER	1	3920	32.0	3923	39.0
3	SLIP SEGMENT - LEFT	1	3921	28.0	3924	37.0
4	HANDLE - CENTER	1	3766	4.0	3766	4.0
5	HANDLE - RIGHT	1	3767	3.5	3767	3.5
6	HANDLE - LEFT	1	3768	3.5	3768	3.5
7	HANDLE PIN w/COTTER PIN	3	98717	0.5	98717	0.5
7.1	HANDLE PIN	-	98717-1	-	98717-1	-
7.2	COTTER PIN	-	30030-10-0	-	30030-10-0	-
8	HINGE PIN w/COTTER PIN	2	2190-1	1.2	2190-1	1.2
8.1	HINGE PIN	-	2190	-	2190	-
8.2	COTTER PIN	-	30040-12-0	-	30040-12-0	-
9	RETAINING RING	3	3738	1.2	3738	1.2
10	SCREW	6	1006C-14-5	-	1006C-14-5	-
11	NUT	6	6606C-00-5	-	6606C-00-5	-
12	INSERT	*	*	-	*	-
-	KIT, HEX NUT, BOLT & WRENCH	-	3737	0.5	3737	0.5

BVM ROTARY SLIPS

SDML - MEDIUM ROTARY SLIPS

SLIP BODY SIZES (in)			3 1/2		4 1/2		5		5 1/2	
ITEM NO.	DESCRIPTION	QTY	PART NO.	WEIGHT (lbs)	PART NO.	WEIGHT (lbs)	PART NO.	WEIGHT (lbs)	PART NO.	WEIGHT (lbs)
-	SLIP COMPLETE, LESS INSERTS	-	15522-1	167.0	15565-1	168.0	15569-1	165.0	15573-1	161.0
1	SLIP SEGMENT - RIGHT	1	15526	50.0	15529	51.0	15532	50.0	15535	49.0
2	SLIP SEGMENT - CENTER	1	15525	53.0	15528	54.0	15531	53.0	15534	52.0
3	SLIP SEGMENT - LEFT	1	15527	50.0	15530	51.0	15533	50.0	15536	49.0
4	HANDLE - CENTER	1	3766	4.0	3766	4.0	3766	4.0	3766	4.0
5	HANDLE - RIGHT	1	3767	3.5	3767	3.5	3767	3.5	3767	3.5
6	HANDLE - LEFT	1	3768	3.5	3768	3.5	3768	3.5	3768	3.5
7	HANDLE PIN w/COTTER PIN	3	98717	0.5	98717	0.5	98717	0.5	98717	0.5
7.1	HANDLE PIN	-	98717-1	-	98717-1	-	98717-1	-	98717-1	-
7.2	COTTER PIN	-	30030-10-0	-	30030-10-0	-	30030-10-0	-	30030-10-0	-
8	HINGE PIN w/COTTER PIN	2	2192-1	1.2	2192-1	1.2	2192-1	1.2	2192-1	1.2
8.1	HINGE PIN	-	2192	-	2192	-	2192	-	2192	-
8.2	COTTER PIN	-	30040-12-0	-	30040-12-0	-	30040-12-0	-	30040-12-0	-
9	RETAINING RING	3	3738	1.2	3739	1.2	3741	1.2	3740	1.2
10	SCREW	6	1006C-14-5	-	1006C-14-5	-	1006C-14-5	-	1006C-14-5	-
11	NUT	6	6606C-00-5	-	6606C-00-5	-	6606C-00-5	-	6606C-00-5	-
12	INSERT	*	*	-	*	-	*	-	*	-
-	KIT, HEX NUT, BOLT & WRENCH	-	3737	0.5	3737	0.5	3737	0.5	3737	0.5

SDXL - EXTRA LONG ROTARY SLIPS

SLIP BODY SIZES (in)			4 1/2		5		5 1/2		7	
ITEM NO.	DESCRIPTION	QTY	PART NO.	WEIGHT (lbs)	PART NO.	WEIGHT (lbs)	PART NO.	WEIGHT (lbs)	PART NO.	WEIGHT (lbs)
-	SLIP COMPLETE, LESS INSERTS	-	15562	182.0	15566	193.0	15570	190.0	86719-2	196.0
1	SLIP SEGMENT - RIGHT	1	15552	54.0	15558	53.0	15555	56.0	10544	59.0
2	SLIP SEGMENT - CENTER	1	15553	59.0	15559	55.0	15556	61.0	10542	62.0
3	SLIP SEGMENT - LEFT	1	15554	54.0	15560	53.0	15557	56.0	10543	59.0
4	HANDLE - CENTER	1	3766	4.0	3766	4.0	3766	4.0	3766	4.0
5	HANDLE - RIGHT	1	3767	3.5	3767	3.5	3767	3.5	3767	3.5
6	HANDLE - LEFT	1	3768	3.5	3768	3.5	3768	3.5	3768	3.5
7	HANDLE PIN w/COTTER PIN	3	98717	0.5	98717	0.5	98717	0.5	98717	0.5
7.1	HANDLE PIN	-	98717-1	-	98717-1	-	98717-1	-	98717-1	-
7.2	COTTER PIN	-	30030-10-0	-	30030-10-0	-	30030-10-0	-	30030-12-0	-
8	HINGE PIN w/COTTER PIN	2	2192-1	1.2	2192-1	1.2	2192-1	1.2	2192-1	1.2
8.1	HINGE PIN	-	2192	-	2192	-	2192	-	2192	-
8.2	COTTER PIN	-	30040-12-0	-	30040-12-0	-	30040-12-0	-	30040-12-0	-
9	RETAINING RING	3	3739	1.2	3741	1.2	3740	1.2	10567	1.2
10	SCREW	6	1006C-14-5	-	1006C-14-5	-	1006C-14-5	-	1006C-14-5	-
11	NUT	6	6606C-00-5	-	6606C-00-5	-	6606C-00-5	-	6606C-00-0	-
12	INSERT	*	*	-	*	-	*	-	*	-
-	KIT, HEX NUT, BOLT & WRENCH	-	3737	0.5	3737	0.5	3737	0.5	3737	0.5

* = SEE INSERT LIST FOR QUANTITY AND PART NUMBER

SDS - SHORT ROTARY SLIPS & SDS INSERTS

SLIP BODY SIZE (in)		3 1/2			4 1/2		
PIPE SIZES (in)		2 3/8	2 7/8	3 1/2	3 1/2	4	4 1/2
P/N: SLIP w/ INSERT		3901	3903	3905	3907	3909	3911
Wt: SLIP w/INSERT (lbs)		117	111	107	143	136	127
INSERT SET	P/N	2160-24	2161-24	2162-24	2163-36	2164-36	2165-36
	Wt (lbs)	21	16	10	32	25	16
	Qty	24	24	24	36	36	36

SDML - MEDIUM ROTARY SLIPS & SDML INSERTS

SLIP BODY SIZE (in)		3 1/2			4 1/2			5			5 1/2		
PIPE SIZES (in)		2 3/8	2 7/8	3 1/2	3 1/2	4	4 1/2	4	4 1/2	5	4 1/2	5	5 1/2
P/N: SLIP w/ INSERT		15524	15523	15522	15563	15564	15565	15567	15568	15569	15571	15572	15573
Wt: SLIP w/INSERT (lbs)		193	188	180	207	199	188	204	196	185	200	192	181
INSERT SET	P/N	2160-30	2161-30	2162-30	2163-45	2164-45	2165-45	2168-45	2166-45	2167-45	2168-45	2169-45	2170-45
	Wt (lbs)	26	21	13	39	31	20	39	31	20	39	31	20
	Qty	30	30	30	45	45	45	45	45	45	45	45	45

SDXL - EXTRA LONG ROTARY SLIPS & SDXL INSERTS

SLIP BODY SIZE (in)		4 1/2			5			5 1/2			API 7"		
PIPE SIZES (in)		3 1/2	4	4 1/2	4	4 1/2	5	4 1/2	5	5 1/2	5 7/8"	7"	
P/N: SLIP w/ INSERT		15515	15514	15513	15518	15517	15516	15521	15520	15519	86721	86720	86719
Wt: SLIP w/INSERT (lbs)		229	219	205	237	227	216	234	224	210	252	242	232
INSERT SET	P/N	2163-54	2164-54	2165-54	2168-54	2166-54	2167-54	2168-54	2169-45	2170-54	2656-72	2172-72	2173-72
	Wt (lbs)	47	67	23	47	37	23	47	37	23			
	Qty												