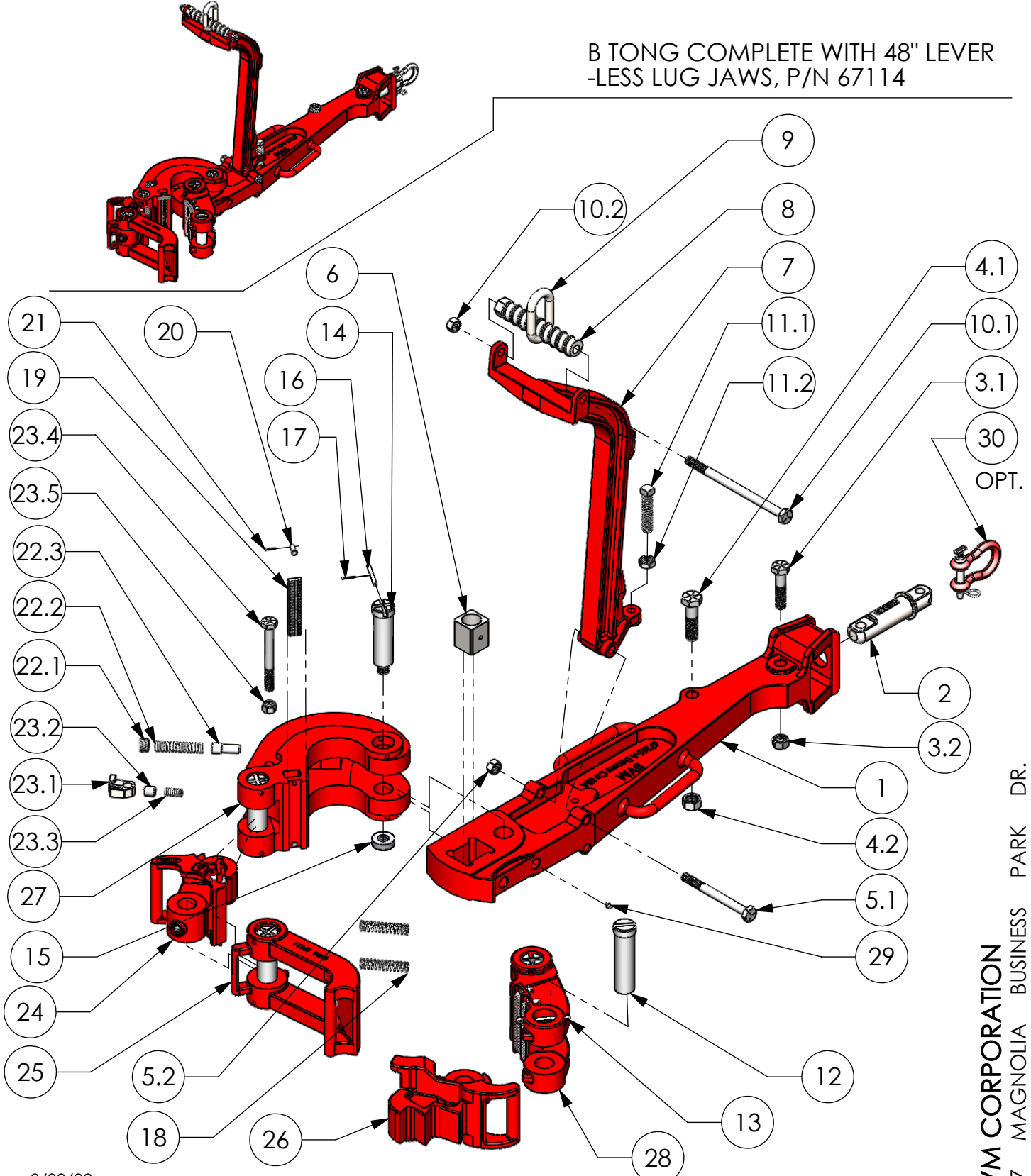


BVM MANUAL TYPE "B" TONG

42,000 - 55,000 ft/lbs TORQUE

The BVM Type "B" Tong has established itself to be one of the best for toughness and durability and it is the most popular tong on the market, also can be ordered with an optional 36" lever. The tong is made from alloy steel, heat treated and magnetic particle inspected. Sizes range from 3 1/2" through 13 3/8" OD All steel specifications are certified.

B TONG COMPLETE WITH 48" LEVER
-LESS LUG JAWS, P/N 67114



BVM MANUAL TYPE "B" TONG

ITEM NO.	DESCRIPTION	QTY REQ.	PART NO.	WEIGHT EACH (lbs)
--	B TONG COMPLETE WITH 48" LEVER - LESS LUG JAWS (55,000 FT-LBS)	--	67114	460.0
--	B TONG COMPLETE WITH 36" LEVER - LESS LUG JAWS (42,000 FT-LBS)	--	67114-1	450.0
--	48" LEVER ASSEMBLY - INCLUDES ITEMS 1-A, 2, 3, 4, 5, 6	--	67265-1	130.0
--	36" LEVER ASSEMBLY - INCLUDES ITEMS 1-B, 2, 3, 4, 5, 6	--	67265-2	120.0
1	-A 48" LEVER	1	67265-A	149.0
	-B 36" LEVER		67265-B	106.0
2	TONG LINE PIN	1	67269	6.9
3	TONG BOLT & NUT	1	67270	1.1
3.1	BOLT	--	1414C-36-8	0.9
3.2	LOCKNUT	--	6214C-00-8	0.2
4	BOLT & NUT	1	67270-1	1.4
4.1	BOLT	--	1416C-32-5	1.2
4.2	LOCKNUT	--	6216C-00-5	0.2
5	HANGER BOLT & NUT	1	67263-1	1.3
5.1	TONG HANGER BOLT	--	1412C-64-5	1.2
5.2	LOCKNUT	--	6212C-00-5	0.1
6	LEVER PIN BLOCK	1	67271	2.0
--	HANGER ASSEMBLY - INCLUDES ITEMS 7, 8, 9, 10, 11	--	67264-1	46.4
7	HANGER	1	67264	37.4
8	HANGER BALANCING SCREW	1	67258	5.0
9	SUSPENSION RING	1	67267	1.5
10	HANGER BALANCING BOLT & NUT	1	67266	1.7
10.1	BOLT	--	1412C-96-5	1.6
10.2	LOCKNUT	--	6212C-00-5	0.1
11	ADJUSTMENT BOLT & NUT	1	67268	0.8
11.1	BOLT	--	8014C-32-5	0.7
11.2	NUT	--	6114C-00-5	0.1
12	HINGE PIN - REMOVABLE	1	67494	4.8
13	COTTER PIN	1	30050-32-0	0.1
14	HINGE PIN - THREADED	4	67261	4.3
15	HINGE PIN NUT	4	67141	0.5
16	HINGE PIN RETAINER PIN	4	67423	0.1
17	COTTER PIN	4	30020-08-0	0.1
18	LATCH SPRING	2	67429	0.1
19	TONG DIE	4	67430	1.0
20	CLEVIS PIN	8	55060-06-0*	0.1
21	COTTER PIN	8	30020-06-0	0.1
22	BOOSTER PLUNGER ASSEMBLY	--	67361-1	0.8
22.1	BOOSTER SPRING RETAINER PLUG	1	67361-4	0.2
22.2	BOOSTER PLUNGER SPRING	1	67361-2	0.2
22.3	BOOSTER PLUNGER	1	67361-3	0.4
23	ADJUSTABLE STOP ASSEMBLY	--	67364-1	2.0
23.1	ADJUSTABLE STOP	1	67364	0.7
23.2	END CAP	1	67364-4	0.1
23.3	ADJUSTABLE STOP SPRING	1	67364-2	0.1
23.4	BOLT	1	1412C-56-8	1.0
23.5	LOCKNUT	1	6212C-00-8	0.1
24	LATCH JAW	1	67610	32.8
--	LATCH ASSEMBLY - INCLUDES ITEMS 15, 18, 25	--	67611-1	39.8
25	LATCH	1	67611	39.3
26	LUG JAW 3 1/2" TO 5" (35,000 FT-LBS)	1	67765-1	30.0
	LUG JAW 4" TO 5 1/2" (55,000 FT-LBS)		67927-1	33.0
	LUG JAW 4 1/4" TO 6 3/4" (55,000 FT-LBS)		67196-1	45.0
	LUG JAW 5" TO 6 3/4" (55,000 FT-LBS)		67622-1	41.0
	LUG JAW 6 5/8" TO 9" (55,000 FT-LBS)		67195-1	58.0
	LUG JAW 9" TO 10 3/4" (40,000 FT-LBS)		67297-1	65.0
	LUG JAW 11 3/4" (30,000 FT-LBS)		67285-1	62.0
	LUG JAW 12 3/4" (30,000 FT-LBS)		67569-1	75.0
	LUG JAW 13 3/8" (30,000 FT-LBS)		67592-1	74.0
--	LONG JAW ASSEMBLY - INCLUDES ITEMS 15 (2X), 19, 20 (2X), 21 (2X), 22, 23, 27	--	67502-1	115.0
27	LONG JAW	1	67502	113.0
--	SHORT JAW ASSEMBLY - INCLUDES ITEMS 15, 19 (2X), 20 (4X), 21 (4X), 28	--	67701-1	33.8
28	SHORT JAW	1	67701	31.0
29	GREASE FITTINGS	AR	940308-1	0.1
30	CLEVIS ASSEMBLY OPTIONAL	--	45711	2.0
31	SAFETY HANDLE ASSEMBLY (OPTIONAL - 2 PER TONG & 1 PER LUG JAW)	--	45729-1	3.0

AR = AS REQUIRED

ADD "SH" TO PART NUMBER TO ADD SAFETY HANDLE (BUMPER)