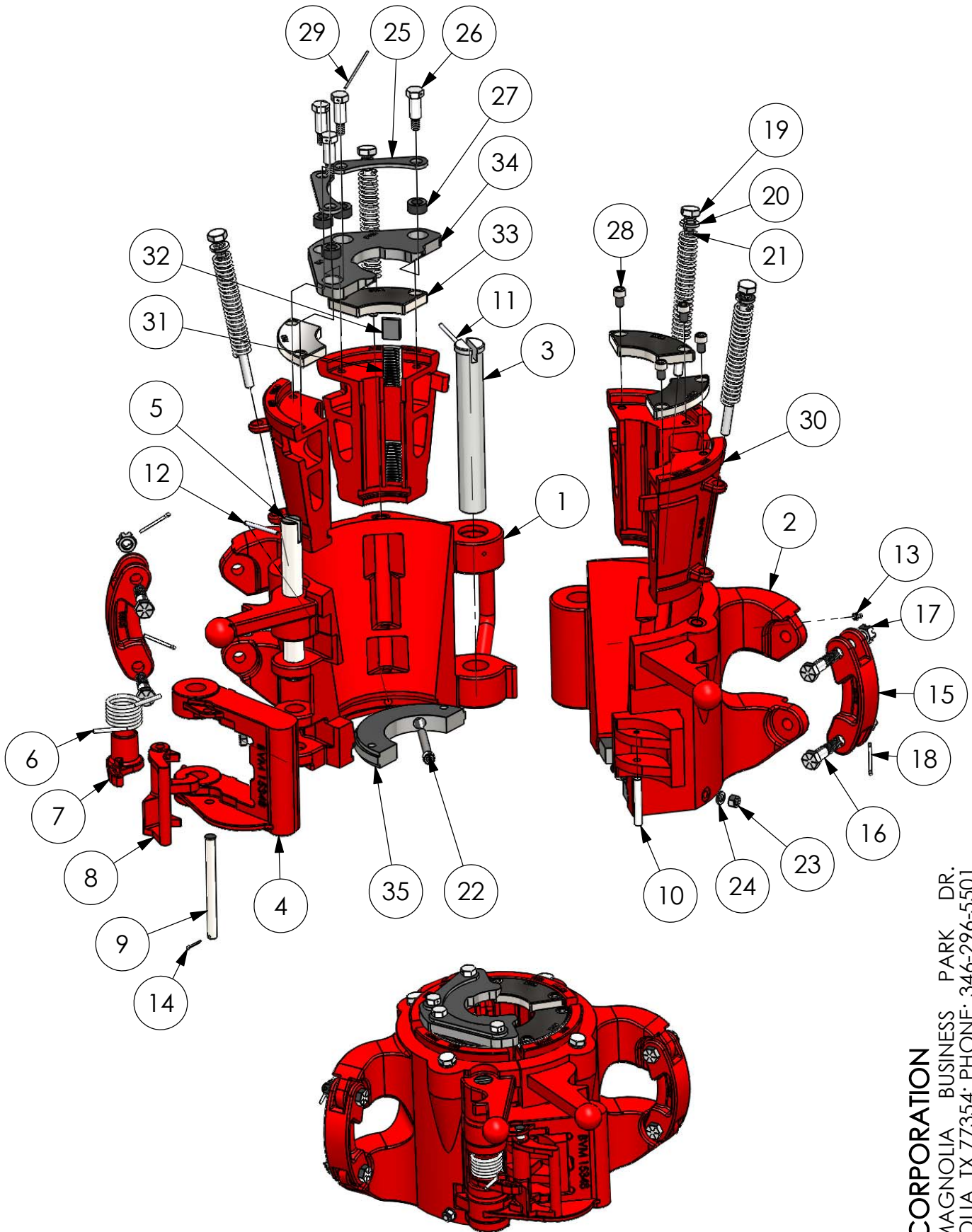


BVM YC ELEVATOR

YC Elevators are produced from high quality heat treated alloy steel and have a working capacity of 75 Tons.



11/11/2021

BVM CORPORATION
307 MAGNOLIA BUSINESS PARK DR.
MAGNOLIA, TX 77354; PHONE: 346-296-5501
www.bvmcorp.com; sales@bvmcorp.com

BVM YC ELEVATOR

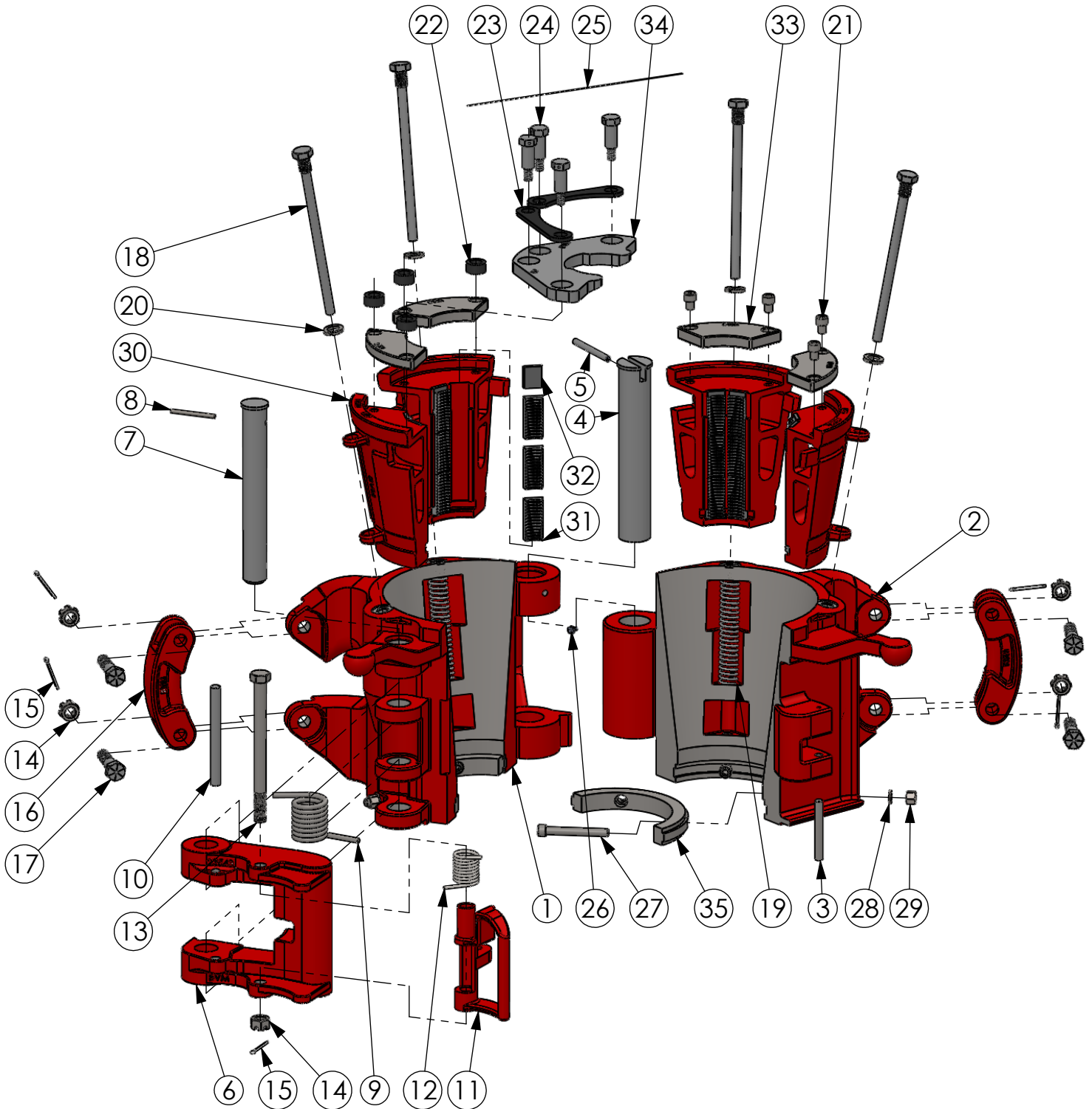
REF NO.	NO. REQ	DESCRIPTION	PART NO.	REF NO.	NO. REQ	DESCRIPTION	PART NO.
1	1	BODY	24140L			4 1/2" SLIP SIZE	24072-5
2	1	DOOR	24140R	30	4	SLIP	24072-4
3*	1	HINGE PIN*	24181-1*	31	16	INSERT	16408
4	1	LATCH	15348	32	8	SPACER	24506
5	1	LATCH PIN	24182	33	4	INSERT RETAINER	30214
6	1	LATCH SPRING	12978	34	1	SLIP SETTING RING	30219
7	1	LATCH CAM	12946	35***	2	GUIDE PLATE	24071-4
8	1	LATCH LOCK	12972				
9	1	LATCH LOCK PIN	13530			5 1/2" x 5" SLIP SIZE	24072-7
10	1	DOOR LUG PIN	12529	30	4	SLIP	24072
11	1	HINGE PIN RETAINER	40040-28-0	31	16	INSERT	24783
12	1	LATCH PIN RETAINER	40040-11-0	32	8	SPACER	24506
13	2	GREASE FITTING	940308-1	33	4	INSERT RETAINER	30221
14	1	COTTER PIN	30020-08-0	34	1	SLIP SETTING RING	30220
15	2	LINK BLOCK	9519	35***	2	GUIDE PLATE	24071
16	4	LINK BLOCK BOLT	8145				
17	4	LINK BLOCK NUT	6812C-00-5			5 1/2" SLIP SIZE	24072-2
18	4	COTTER PIN	30AB0-14-0	30	4	SLIP	24072
19	4	SLIP BOLT	24076	31	16	INSERT	16407
20	4	LOCKWASHER	20120-00-0	32	8	SPACER	24506
21	4	SLIP SPRING	24049	33	4	INSERT RETAINER	30224
22	4	GUIDE PLATE SCREW	1208C-32-8	34	1	SLIP SETTING RING	30223
23	4	GUIDE PLATE NUT	6608C-00-5	35***	2	GUIDE PLATE	24071-1
24	4	LOCKWASHER	20080-00-0				
25**	2	RETAINER 3 1/2" - 7"	30216			7" x 6 5/8" SLIP SIZE	24077-7
26**	4	SHOULDER SCREW	30211	30	4	SLIP	24077
27**	4	RUBBER BUSHING	30213	31	24	INSERT	24748
28**	4	INSERT RETAINER SCREW	1208C-06-8	32	12	SPACER	24506
29	AR	LOCKWIRE	947879-15	33	4	INSERT RETAINER	30227
				34	1	SLIP SETTING RING	30226
		4 1/2" x 3 1/2" SLIP SIZE	34931	35***	2	GUIDE PLATE	24071-3
30	4	SLIP	24072-4				
31	16	INSERT	24779			7" SLIP SIZE	24077-1
32	8	SPACER	24506	30	4	SLIP	24077
33	4	INSERT RETAINER	30214	31	24	INSERT	16407
34	1	SLIP SETTING RING	34932	32	12	SPACER	24506
35***	2	GUIDE PLATE	26827-1	33	4	INSERT RETAINER	30230
				34	1	SLIP SETTING RING	30229
		4 1/2" x 4" SLIP SIZE	26830	35***	2	GUIDE PLATE	24071-2
30	4	SLIP	24072-4				
31	16	INSERT	24781				
32	8	SPACER	24506				
33	4	INSERT RETAINER	30214				
34	1	SLIP SETTING RING	30209				
35***	2	GUIDE PLATE	26827				

* = Use P/N 24181 for elevators S/N 27984 and lower
 Use P/N 24181-1 for elevators S/N 30564 and higher
 ** = Part of Slip Assembly
 *** = Not part of Slip Assembly

AR = As Required

BVM MYC ELEVATOR

MYC Elevators are produced from cast alloy heat treated steel and have a working capacity of 125 Tons.



BVM CORPORATION

307 MAGNOLIA BUSINESS PARK DR.
MAGNOLIA, TX 77354; PHONE: 346-296-5501
www.bvmcorp.com; sales@bvmcorp.com

BVM MYC ELEVATOR

REF NO.	NO. REQ.	DESCRIPTION	PART NUMBER
1	1	Body	24139L
2	1	Door	24139R
3	1	Door Lug Pin	200366
4	1	Slotted Hinge Pin	200364-1 ^
5	1	3/8 x 4 Roll Pin	40060-32-0
6	1	Latch	200363
7	1	Latch Pin	200365
8	1	Roll Pin 1/4" X 3"	40040-24-0
9	1	Latch Spring	200367
10	1	Spring Stop Pin	23548
11	1	Latch Lock	13152
12	1	Latch Lock Spring	13188
13	1	Latch Lock Bolt	15101
14	5	Hex Slotted Nut 0.7500-10-D-N	6812C-00-5
15	5	Cotter Pin 5/32 x 1 3/4	30AB0-14-0
16	2	Link Block	9519
17	4	Link Block Bolt	8145
18	4	Slip Bolt	24076
19	4	Slip Spring	24049
20	4	Regular Lock Washer 0.75	20120-00-0
21	4	Socket Head Cap Screw 0.5-13x1.00x1.00-N	1208C-08-5
22	4	Rubber Bushing	30213
23	2	Retainer	30216
24	4	Shoulder Screw	30211
25	AR	Lockwire	947879
26	1	1/8" NPT Grease Fitting	940308-1
27	4	Hex-Socket Head Cap Screw 0.5-13x4x1.75-N	1208C-32-8
28	4	Regular LW 0.5	20080-00-0
29	4	Nyloc Nut 0.5000-13-D-N	6608C-00-5
30	4	Slip	*
31	*	Insert	*
32	*	Spacer	*
33	4	Insert Retainer	*
34	1	Slip Setting Ring	*
35	2	Bottom Guide Plate	*

* - REFER TO TABLE FOR SIZE SPECIFIC PART NUMBERS AND QUANTITIES

** - NOT PART OF SLIP ASSEMBLY

^ - USE 200364-1 FOR MYC ELEVATOR SN 31301 AND HIGHER
USE 200364 FOR MYC ELEVATORS SN 31300 AND LOWER

AR = AS REQUIRED

REF NO.	NO. REQ.	DESCRIPTION	PART NO.
		4 1/2" x 3 1/2" SLIP SIZE	34931
30	4	SLIP	24072-4
31	16	INSERT	24779
32	8	SPACER	24506
33	4	INSERT RETAINER	30214
34**	1	SLIP SETTING RING	34932
35**	2	GUIDE PLATE	26827-1

REF NO.	NO. REQ.	DESCRIPTION	PART NO.
		4 1/2" x 4" SLIP SIZE	26830
30	4	SLIP	24072-4
31	16	INSERT	24781
32	8	SPACER	24506
33	4	INSERT RETAINER	30214
34**	1	SLIP SETTING RING	30209
35**	2	GUIDE PLATE	26827

REF NO.	NO. REQ.	DESCRIPTION	PART NO.
		4 1/2" SLIP SIZE	24072-5
30	4	SLIP	24072-4
31	16	INSERT	BJ 16408
32	8	SPACER	24506
33	4	INSERT RETAINER	30214
34**	1	SLIP SETTING RING	30219
35**	2	GUIDE PLATE	24071-4

REF NO.	NO. REQ.	DESCRIPTION	PART NO.
		5 1/2" x 5" SLIP SIZE	24072-7
30	4	SLIP	24072
31	16	INSERT	24783
32	8	SPACER	24506
33	4	INSERT RETAINER	30221
34**	1	SLIP SETTING RING	30220
35**	2	GUIDE PLATE	24071

REF NO.	NO. REQ.	DESCRIPTION	PART NO.
		5 1/2" SLIP SIZE	24072-2
30	4	SLIP	24072
31	16	INSERT	BJ 16407
32	8	SPACER	24506
33	4	INSERT RETAINER	30224
34**	1	SLIP SETTING RING	30223
35**	2	GUIDE PLATE	24071-1

REF NO.	NO. REQ.	DESCRIPTION	PART NO.
		7" x 6 5/8" SLIP SIZE	24077-7
30	4	SLIP	24077
31	24	INSERT	24748
32	12	SPACER	24506
33	4	INSERT RETAINER	30227
34**	1	SLIP SETTING RING	30226
35**	2	GUIDE PLATE	24071-3

REF NO.	NO. REQ.	DESCRIPTION	PART NO.
		7" SLIP SIZE	24077-1
30	4	SLIP	24077
31	24	INSERT	BJ 16407
32	12	SPACER	24506
33	4	INSERT RETAINER	30230
34**	1	SLIP SETTING RING	30229
35**	2	GUIDE PLATE	24071-2