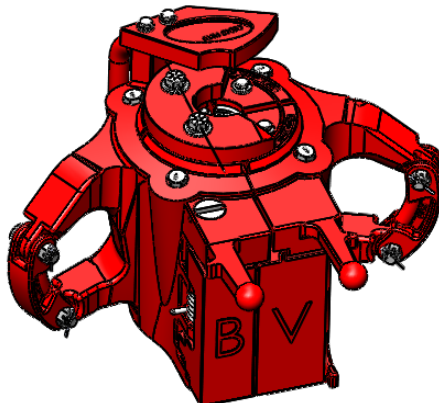
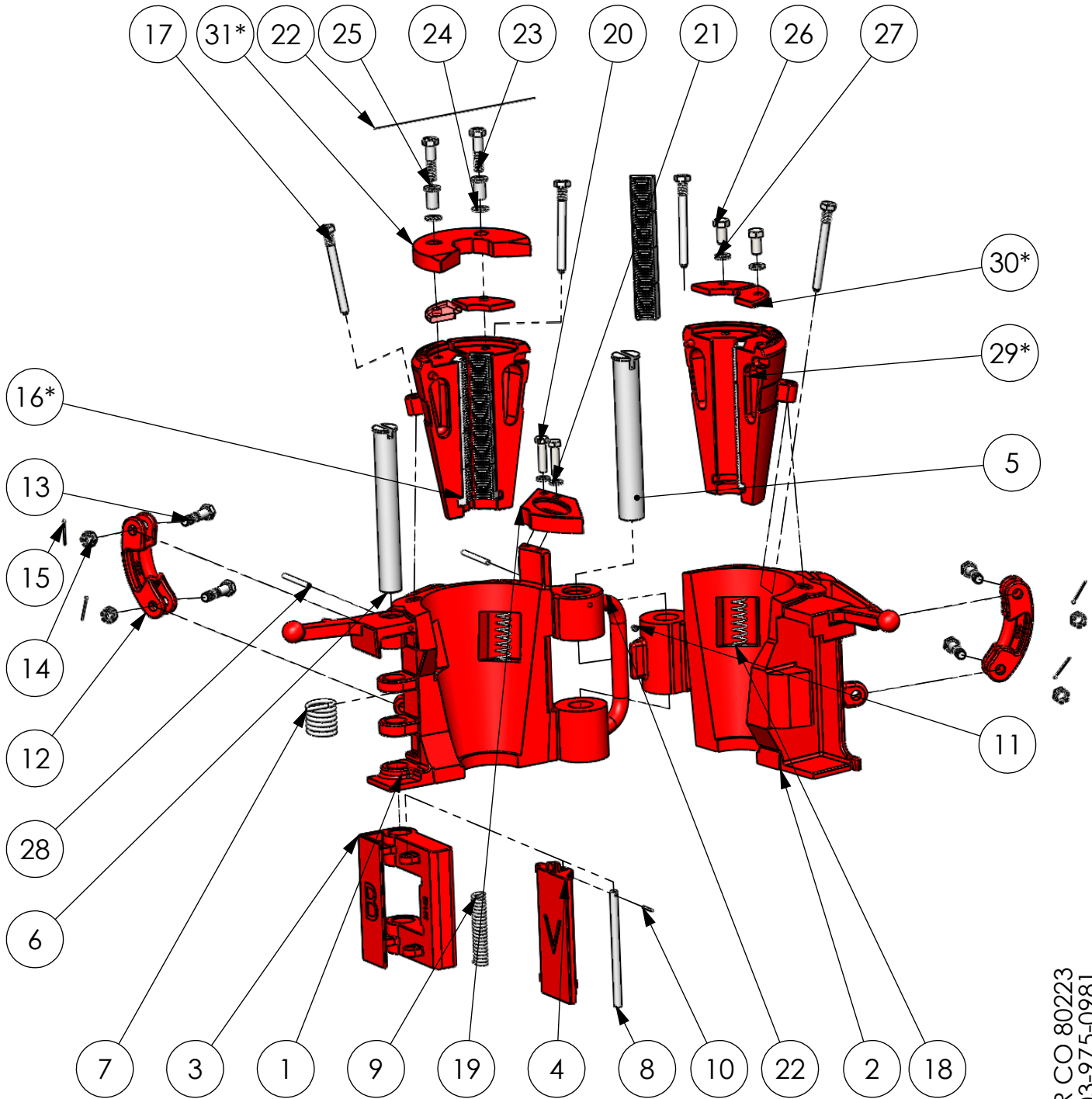


# BVM HYT ELEVATOR

HYT Elevators are produced from cast alloy heat treated steel and have a working capacity of 150 Ton.



12/3/12

Note: This Data Sheet may be attached to Product Maintenance Manual

**BVM CORPORATION**  
 430 S. NAVAJO STREET, DENVER CO 80223  
 PHONE: 303-975-1402; FAX: 303-975-0981  
 www.bvmcorp.com; sales@bvmcorp.com

# BVM HYT ELEVATOR

ITEM NO.	PART NUMBER	DESCRIPTION	QTY.
1	39284LW	BODY WITH HANDLE	1
2	39284R	DOOR	1
3	39162	LATCH	1
4	39161	LATCH LOCK	1
5	39239	HINGE PIN	1
6	39238	LATCH PIN	1
7	39240	LATCH SPRING	1
8	39251	LATCH LOCK PIN	1
9	39241	LATCH LOCK SPRING	1
10	40030-12-0	ROLL PIN	1
11	940308-1	1/8" NPT Grease Fitting	1
12	9519	Link Block	2
13	8145	Link Block Bolt	4
14	6812C-00-5	3/4"-10 Hex Slotted Nut	4
15	30AB0-14-0	Cotter Pin - 3/16 x 1 1/4	4
16*	39175	SLIP	4
17	52321	SLIP BOLT	4
18	52539-1	SLIP SPRING	4
19	51090	GUIDE PLATE	1
20	1410C-20-8	Hex Bolt 5/8-11x2.5	2
21	20100-00-0	Regular Lock Washer 5/8-11	2
22	947879	Lockwire	1
23	939098-96	HEX HEAD CAPSCREW	2
24	22120-00-0	Narrow FW 3/4-10	2
25	51089	SETTING RING BUSHING	2
26	1412C-12-8	Hex Bolt 3/4-10x1.5	2
27	20120-00-0	Regular Lock Washer 0.75	2
28	40060-32-0	Roll Pin 0.375x4.00	2
29*	29255	INSERTS	16
30*	39246	INSERT RETAINER	4
31*	39214-1	SLIP SETTING RING	1

ITEM NO.	P/N	DESCRIPTION	QTY.
2 7/8" X 2 3/8" SLIP SIZE			
16	39175	SLIP	4
29	29255	INSERT	16
30	39246C	INSERT RETAINER	4
31	39214-1C	SLIP SETTING RING	1
2 7/8" SLIP SIZE			
16	39175	SLIP	4
29	24773	INSERT	16
30	39246C	INSERT RETAINER	4
31	39214-2	SLIP SETTING RING	1
3 1/2" X 2 7/8" SLIP SIZE			
16	39174	SLIP	4
29	30358	INSERT	32
30	39247	INSERT RETAINER	4
31	39214-2	SLIP SETTING RING	1
3 1/2" SLIP SIZE			
16	39174	SLIP	4
29	24774	INSERT	32
30	39247	INSERT RETAINER	4
31	39214-3	SLIP SETTING RING	1

\* SEE NEXT TABLE FOR DIFFERENT SIZES