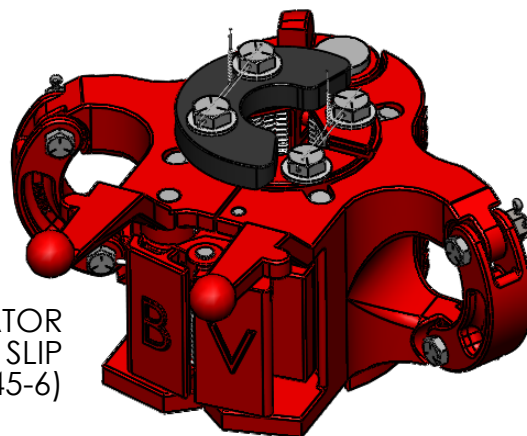
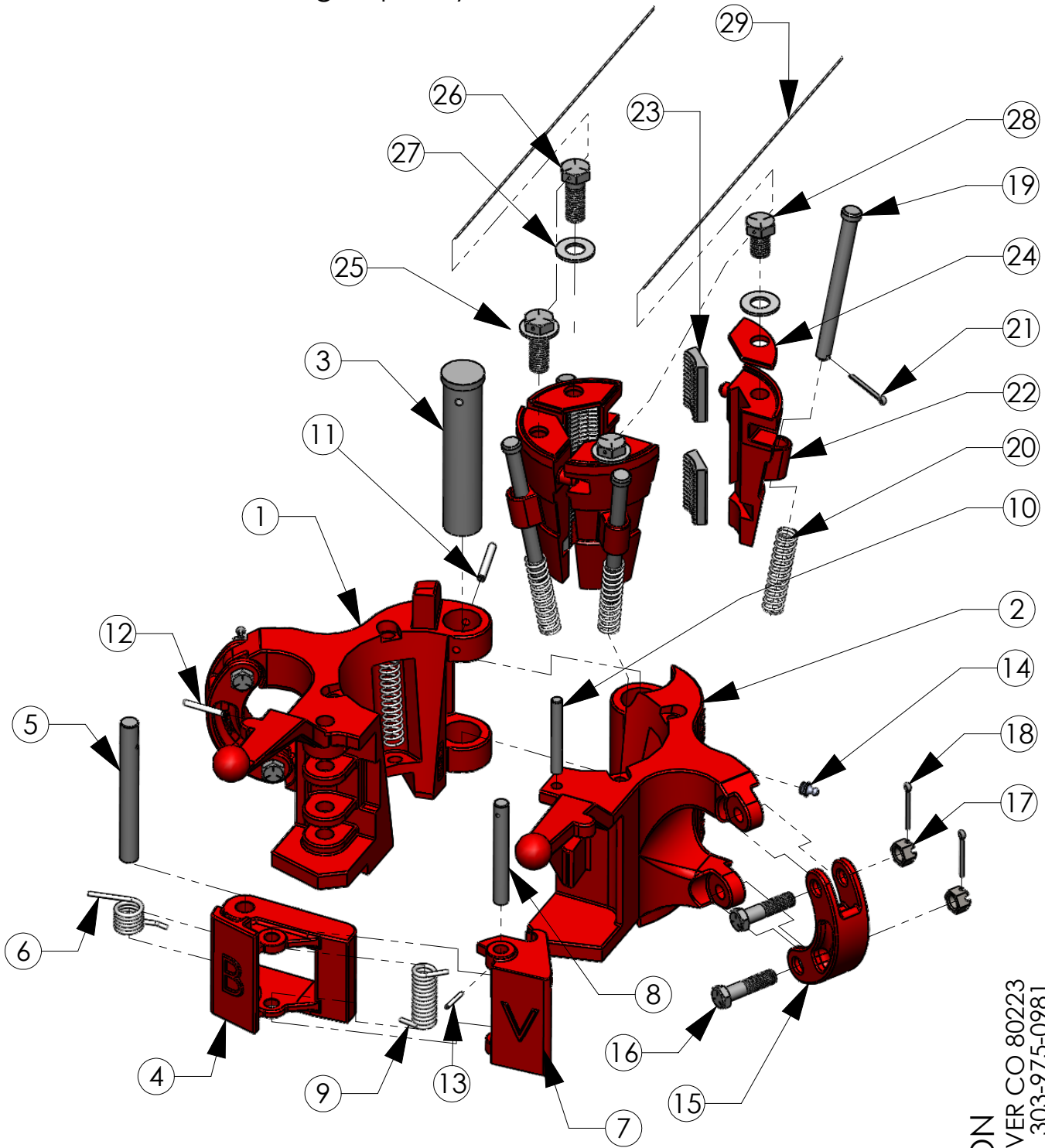


# BVM LYT 20 TON ELEVATOR

LYT Elevators are slip type elevators produced from cast alloy heat treated steel with a working capacity of 20 ton.



LYT ELEVATOR  
with 2-1/16 SLIP  
(P/N 28745-6)

**BVM CORPORATION**  
430 S. NAVAJO STREET, DENVER CO 80223  
PHONE: 303-975-1402; FAX: 303-975-0981  
www.bvmcorp.com; sales@bvmcorp.com

BVM LYT 20 TON ELEVATOR

ITEM NO.	DESCRIPTION	NO. REQ	PART NO.	WEIGHT EACH (lbs)
--	LYT ASSEMBLY	--	28750	63.0
1	BODY	1	28750L	26.5
2	DOOR	1	28750R	26.5
3	HINGE PIN	1	28753	2.1
4	LATCH	1	30644	4.1
5	LATCH PIN	1	28757-1*	0.4
6	LATCH SPRING	1	32486	0.2
7	LATCH LOCK	1	30645	1.3
8	LATCH LOCK PIN	1	28767	0.2
9	LATCH LOCK SPRING	1	28769	0.2
10	LATCH LOCK DOOR PIN	1	51060-08-0	0.1
11	HINGE PIN RETAINER	1	40040-16-0	0.1
12	LATCH PIN RETAINER	1	40030-12-0	0.1
13	LATCH LOCK PIN RETAINER	1	40020-08-0	0.1
14	GREASE FITTING	1	940308-1	0.1
15	LINK BLOCK	2	23404	1.4
16	LINK BLOCK SCREW	4	23406	0.2
17	LINK BLOCK NUT	4	6808C-00-5	0.1
18	COTTER PIN (for Link Block Screw)	4	30AB0-12-0	0.1
19	SLIP PIN	4	28760	0.3
20	SLIP SPRING	4	28761	0.1
21	COTTER PIN (for Slip Pin)	4	30AB0-06-0	0.1

<b>2 1/16" SLIP SIZE</b>				
22	SLIP SEGMENT	4	28745-1	2.7
23	INSERT 2-1/16" X 2"	8	28772	0.3
24	INSERT RETAINER	4	28786	0.1
25	SETTING RING 2-1/16" X 2-1/16"	1	28782	2.4
26	SETTING RING SCREW	2	28785	0.3
27	FLAT WASHER	4	28100-00-5	0.1
28	INSERT RETAINER SCREW	2	28787	0.2
29	LOCKWIRE	AR	947879	0.1

<b>2 1/16" x 2" SLIP SIZE</b>				
22	SLIP SEGMENT	4	28745-1	2.2
23	INSERT 2-1/16" X 2"	8	28772	0.3
24	INSERT RETAINER	4	28786	0.1
25	SETTING RING 2-1/16" X 2"	1	28737	2.4
26	SETTING RING SCREW	2	28785	0.3
27	FLAT WASHER	4	28100-00-5	0.1
28	INSERT RETAINER SCREW	2	28787	0.2
29	LOCKWIRE	AR	947879	0.1

ITEM NO.	DESCRIPTION	NO. REQ	PART NO.	WEIGHT EACH (lbs)
<b>2 1/16" x 1.900" SLIP SIZE</b>				
22	SLIP SEGMENT	4	28745-1	2.7
23	INSERT 2-1/16" X 1-1/ 2"	8	28775	0.3
24	INSERT RETAINER	4	28786	0.1
25	SETTING RING 2-1/16" X 1-1/ 2"	1	28783	2.5
26	SETTING RING SCREW	2	28785	0.3
27	FLAT WASHER	4	28100-00-5	0.1
28	INSERT RETAINER SCREW	2	28787	0.2
29	LOCKWIRE	AR	947879	0.1

<b>2 1/16" x 1.660" SLIP SIZE</b>				
22	SLIP SEGMENT	4	28745-1	2.7
23	INSERT 2-1/16" X 1-1/ 4"	8	28778	0.4
24	INSERT RETAINER	4	28786	0.1
25	SETTING RING 2-1/16" X 1-1/ 4"	1	28784	2.6
26	SETTING RING SCREW	2	28785	0.3
27	FLAT WASHER	4	28100-00-5	0.1
28	INSERT RETAINER SCREW	2	28787	0.2
29	LOCKWIRE	AR	947879	0.1

<b>2 1/16" x 1.315" SLIP SIZE</b>				
22	SLIP SEGMENT	4	28745-1	2.7
23	INSERT 2-1/16" X 1"	8	28749	0.4
24	INSERT RETAINER	4	28786	0.1
25	SETTING RING 2-1/16" X 1"	1	28736	2.7
26	SETTING RING SCREW	2	28785	0.3
27	FLAT WASHER	4	28100-00-5	0.1
28	INSERT RETAINER SCREW	2	28787	0.2
29	LOCKWIRE	AR	947879	0.1

<b>2 1/16" x 1.050" SLIP SIZE</b>				
22	SLIP SEGMENT	4	28745-1	2.7
23	INSERT 2-1/16" X 3/4"	8	29370	0.4
24	INSERT RETAINER	4	28786	0.1
25	SETTING RING 2-1/16" X 3/4"	1	28735	2.7
26	SETTING RING SCREW	2	28785	0.3
27	FLAT WASHER	4	28100-00-5	0.1
28	INSERT RETAINER SCREW	2	28787	0.2
29	LOCKWIRE	AR	947879	0.1

AR = As Required

\*=Use P/N 28757 for elevators S/N 28993 or lower

Use P/N 28757-1 for elevators S/N 31851 or higher