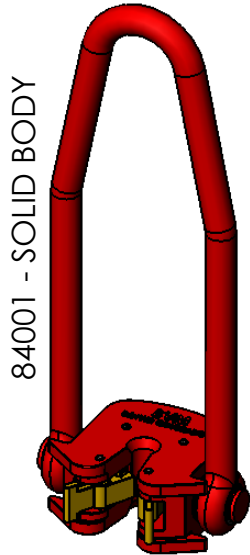
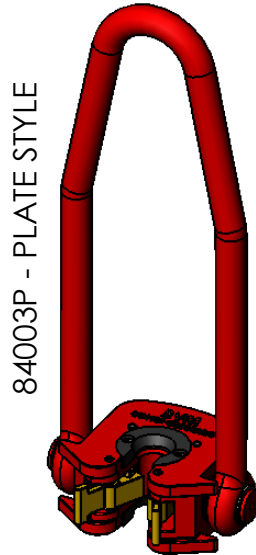


BVM "SR" SUCKER ROD ELEVATOR

BVM "SR" Sucker Rod Elevator is available to handle rod sizes from 5/8" through 1 1/4". The Elevator is designed for versatility in workovers and well servicing operations, with an API rated capacity of 20 Tons. The "SR" Elevator has a spring loaded latch and the rod can only be released by the operator. The bail and body is made from alloy steel and heat treated for maximum strength. All steel specifications are certified.



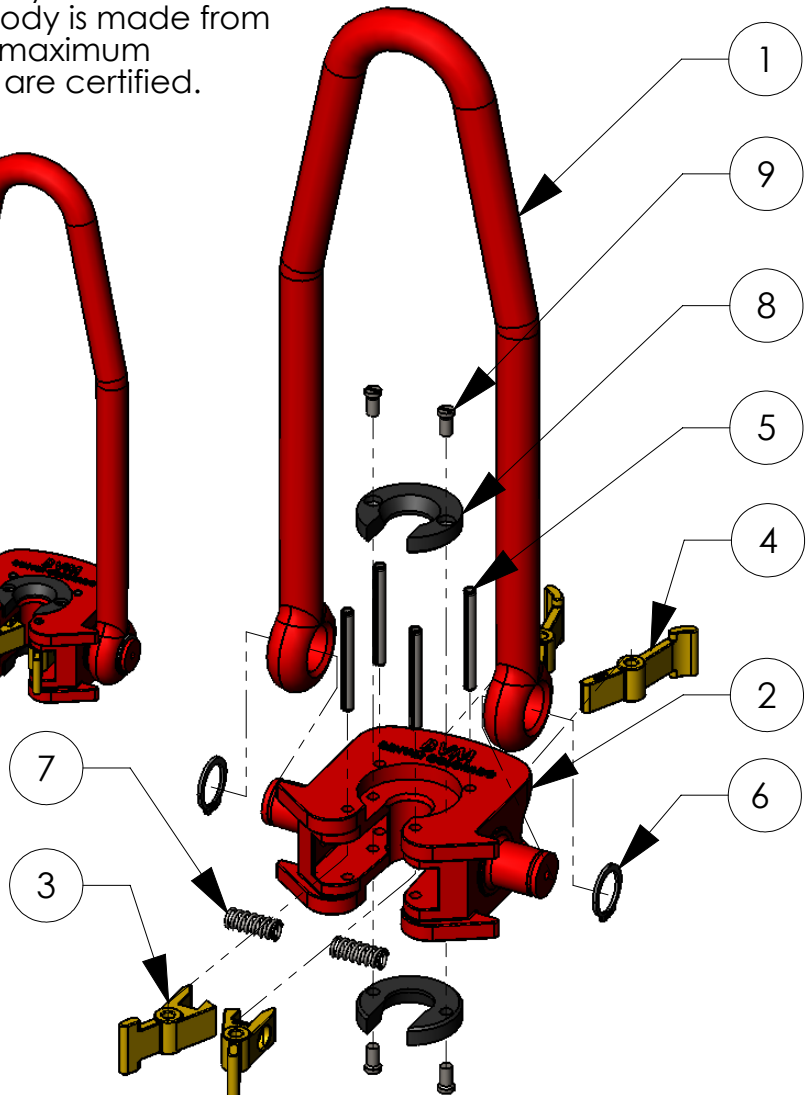
84001 - SOLID BODY



84003P - PLATE STYLE

SPECIFICATIONS

COMPLETE ELEVATOR		
ROD SIZE	PART NO.	WEIGHT (LBS)
5/8" - 3/4"	84001	30
3/4" - 7/8"	84002	30
1"	84003	30
1-1/8"	84004	30
1-1/4"	84005	30
5/8" - 1-1/8"	84003P	30
5/8" - 1-1/4"	84006P	30



REPLACEMENT PARTS

ITEM NO.	PART NO.	DESCRIPTION	QTY							WEIGHT (LBS) EACH
			84001	84002	84003	84004	84005	84003P	84006P	
1	84010	BAIL	1	1	1	1	1	1	1	13.4
2	84001SR	SOLID BODY 5/8" - 3/4"	1	-	-	-	-	-	-	12.4
	84002SR	SOLID BODY 3/4" - 7/8"	-	1	-	-	-	-	-	12.2
	84003SR	SOLID BODY 1"	-	-	1	-	-	-	-	12.0
	84004SR	SOLID BODY 1 1/8"	-	-	-	1	-	-	-	12.0
	84005SR	SOLID BODY 1 1/4"	-	-	-	-	1	-	-	12.0
	84003SRP	PLATE STYLE 5/8" - 1-1/8"	-	-	-	-	-	1	-	11.4
	84006SRP	PLATE STYLE 5/8" - 1-1/4"	-	-	-	-	-	-	1	11.4
3	84015	FRONT LATCH	2	2	2	2	2	2	2	0.4
4	84011	BACK LATCH	2	2	2	2	2	2	2	0.4
5	40050-22-0	ROLL PIN	4	4	4	4	4	4	4	0.1
6	84017	SNAP RING	2	2	2	2	2	2	2	0.1
7	84012	SPRING	2	2	2	2	2	2	2	0.1
8	84018	ROD PLATE 5/8" - 3/4"	-	-	-	-	-	2	2	0.6
	84019	ROD PLATE 3/4" - 7/8"	-	-	-	-	-			0.5
	84020	ROD PLATE 1"	-	-	-	-	-			0.5
	84021	ROD PLATE 1 1/8"	-	-	-	-	-			0.4
		(1-1/4" Fiberglass)	-	-	-	-	-			
9	84022	ROD PLATE SCREW	-	-	-	-	-	4	4	0.1

BVM CORPORATION
 307 MAGNOLIA BUSINESS PARK DR.
 MAGNOLIA, TX 77354; PHONE: 346-296-5501
 www.bvmcorp.com; sales@bvmcorp.com