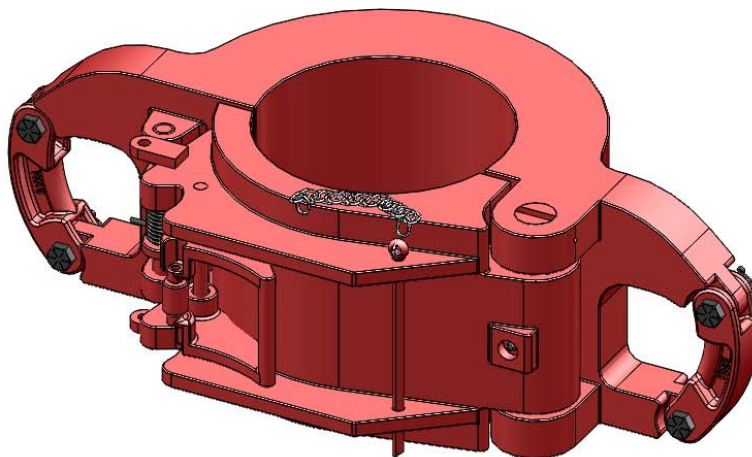
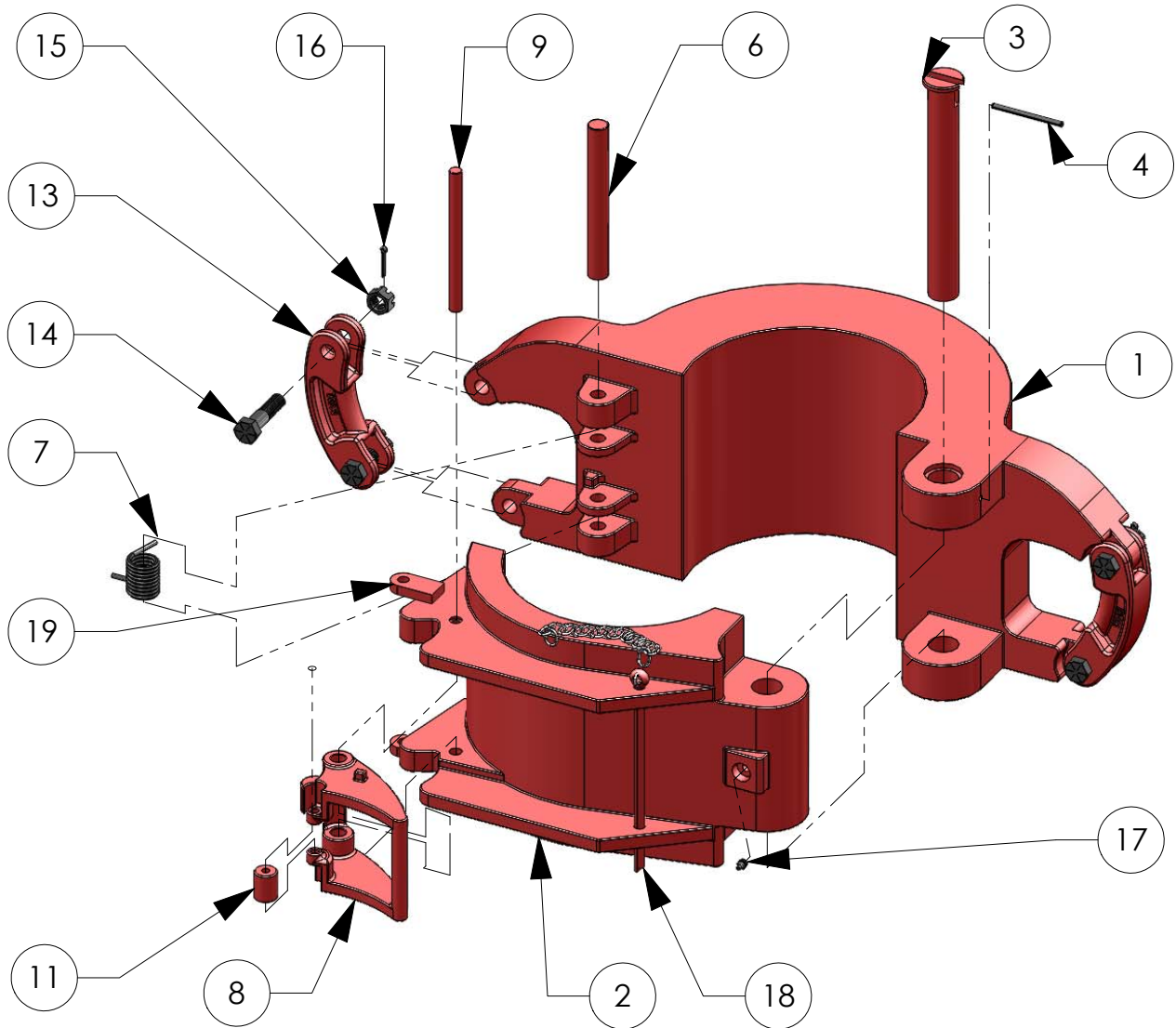


# BVM SLX SERIES ELEVATOR

SLX ELEVATORS ARE CONVENTIONAL SIDE DOOR ELEVATORS USED FOR HANDLING TUBING & CASING RANGING IN SIZE FROM 2 3/8" TO 36" AND HAVE A LOAD RATING OF 100 TO 250 TONS. BVM ELEVATORS ARE MADE FROM ALLOY STEEL, HEAT TREATED, LOAD TESTED, AND MAGNETIC PARTICLE INSPECTED. ALL STEEL SPECIFICATIONS ARE CERTIFIED.



12/9/21

**BVM CORPORATION**  
307 MAGNOLIA BUSINESS PARK DR.  
MAGNOLIA, TX 77354; PHONE: 346-296-5501  
www.bvmcorp.com; sales@bvmcorp.com

# BVM SLX SERIES ELEVATOR

REF NO.	DESCRIPTION	NO. REQ	SLX 100	SLX 150	SLX 150	SLX 150	SLX 150	SLX 150	SLX 150
			2 3/8" - 5 3/4"	2 7/8" - 8 5/8"	9 1/2"-10 3/4"	11 3/4"-13 5/8"	14"-20"	24" - 30"	36"
			33854-***	31239-***	33950-***	33982-***	33632-***	33175-***	33180-***
1	BODY	1	33854L	31239L	33950L	33982L	33632L	33175L	33180L
2	DOOR	1	33854R	31239R	33950R	33982R	33632R	33175R	33180R
-	DOOR HANDLE	1	33810-1	33810-3	33810-3	33810-3(x2)	33810-4 (x2)	33810-3 (x2)	33810-4 (x2)
3	HINGE PIN	1	34613-1	31240	33953-1	33954	33646-3	34179-3	34179-2
4	HINGE PIN RETAINER	1	40040-16-0	40040-16-0	40040-26-0	40040-28-0	40040-32-0	40040-32-0	40040-32-0
5	LATCH	1	33813	31331	31331	31331	33634	33634	33634
6	LATCH PIN	1	29980-3	50713	32424-3	32424-3	33645-1	33645-1	33645-2
7	LATCH SPRING	1	33818	31383	31383	31383	33657	33657	33657
8	LATCH LOCK	1	33812	31332	31332	31332	33635	33635	33635
9	LATCH LOCK PIN	1	29980-3	29980-4	29980-5	29980-5	50713-1	50713-1	29980-6
10	LATCH LOCK SPRING	1	33816	31404	31404	31404	33658	33658	33658
11	ROLLER	1	31407	31407	31407	31407	31407	31407	31407
12	ROLLER PIN	1	31584	31584	31584	31584	31584	31584	31584
13	LINK BLOCK	2	32430	9519	9519	9519	9519	9519	9519
14	LINK BLOCK BOLT	4	939051-65	8145	8145	8145	8145	8145	8145
15	LINK BLOCK NUT	4	6810C-00-5	6812C-00-5	6812C-00-5	6812C-00-5	6812C-00-5	6812C-00-5	6812C-00-5
16	COTTER PIN	4	30AB0-14-0	30AB0-14-0	30AB0-14-0	30AB0-14-0	30AB0-14-0	30AB0-14-0	30AB0-14-0
17	GREASE FITTING	1	940308-1	940308-1	940308-1	940308-1	940308-1	940308-1	940308-1
18	PIN & CHAIN ASSEMBLY	1	10571-1	10571-2	10571-3	10571-2	10571-4	10571-4	10571-4
19	SAFETY PIN SUPPORT	2	10428	10428	10428	10428	10428	10428	10428
-	HANDLES	2	-	-	-	-	1360-14	1360-14	1360-14

REF NO.	DESCRIPTION	NO. REQ	SLX 250	SLX 250	SLX 250	SLX 250	SLX 250	SLX 250
			4 1/2" - 8 5/8"	9 1/4"-10 3/4"	10 3/4" - 14"	16" - 24"	24" - 30"	36"
			43239-***	43950-***	43982-***	43632-***	43175-***	43180-***
1	BODY	1	43239L	43950L	43982L	43632L	43175R	43180L
2	DOOR	1	43239R	43950R	43982R	43632R	43175L	43180R
-	DOOR HANDLE	1	33810-2	33810-2	33810-4	33810-3(x2)	33810-3 (x2)	33810-4 (x2)
3	HINGE PIN	1	34617-1	34617-1	33646-4	34179-3	34179-3	34179-2
4	HINGE PIN RETAINER	1	40040-24-0	40040-24-0	40040-24-0	40040-28-0	40040-32-0	40040-32-0
5	LATCH	1	31331	31331	33634	33634	33634	33634
6	LATCH PIN	1	33645	32424-3	33645-2	33645-2	33645-1	33645-2
7	LATCH SPRING	1	31383	33657	33657	33657	33657	33657
8	LATCH LOCK	1	31332	31332	33635	33635	33635	33635
9	LATCH LOCK PIN	1	29980-4	29980-5	50713-1	29980-5	50713-1	29980-6
10	LATCH LOCK SPRING	1	31404	33658	33658	33658	33658	33658
11	ROLLER	1	31407	31407	31407	31407	31407	31407
12	ROLLER PIN	1	31584	31584	31584	31584	31584	31584
13	LINK BLOCK	2	9519	9519	9519	9519	9519	9519
14	LINK BLOCK BOLT	4	8145	8145	8145	8145	8145	8145
15	LINK BLOCK NUT	4	6812C-00-5	6812C-00-5	6812C-00-5	6812C-00-5	6812C-00-5	6812C-00-5
16	COTTER PIN	4	30AB0-14-0	30AB0-14-0	30AB0-14-0	30AB0-14-0	30AB0-14-0	30AB0-14-0
17	GREASE FITTING	1	940308-1	940308-1	940308-1	940308-1	940308-1	940308-1
18	PIN & CHAIN ASSEMBLY	1	10571-3	10571-4	10571-4	10571-4	10571-4	10571-4
19	SAFETY PIN SUPPORT	2	10428	10428	10428	10428	10428	10428
-	HANDLES	2	-	-	-	1360-14	1360-14	1360-14

\*\*\* = See Bore Code Charts

# SLX Elevator Bore Codes

Size (in)	Style	100 Ton	150 Ton	250 Ton
2 3/8"	Drill Collar w/ Lift Plug	33854-513	-	-
2 3/8"	Plain (NU) Tubing	33854-158	-	-
2 3/8"	Upset (EU) Tubing	33854-159	-	-
2 1/2"	Drill Collar w/ Lift Plug	33854-201	-	-
2 3/4"	Drill Collar w/ Lift Plug	33854-203	-	-
2 7/8"	Drill Collar w/ Lift Plug	33854-824	31239-824	-
2 7/8"	Plain (NU) Tubing	33854-160	31239-160	-
2 7/8"	Upset (EU) Tubing	33854-161	31239-161	-
3"	Drill Collar w/ Lift Plug	33854-205	31239-205	-
3 1/8"	Drill Collar w/ Lift Plug	33854-206	31239-206	-
3 1/4"	Drill Collar w/ Lift Plug	33854-207	31239-207	-
3 3/8"	Drill Collar w/ Lift Plug	33854-795	31239-795	-
3 1/2"	Drill Collar w/ Lift Plug	33854-209	31239-209	-
3 1/2"	Drill Collar w/ Zip Lift Recess	33854-625	31239-625	-
3 1/2"	Plain (NU) Tubing	33854-162	31239-162	-
3 1/2"	Upset (EU) Tubing	33854-163	31239-163	-
3 3/4"	Drill Collar w/ Lift Plug	33854-211	31239-211	-
3 3/4"	Drill Collar w/ Zip Lift Recess	33854-582	31239-582	-
3 7/8"	Drill Collar w/ Lift Plug	33854-763	31239-763	-
4"	Drill Collar w/ Lift Plug	33854-213	31239-213	-
4"	Plain (NU) Tubing	33854-164	31239-164	-
4"	Upset (EU) Tubing	33854-165	31239-165	-
4 1/8"	Drill Collar w/ Lift Plug	33854-519	31239-519	-
4 1/8"	Drill Collar w/ Zip Lift Recess	33854-177	31239-177	-
4 1/4"	Drill Collar w/ Lift Plug	33854-548	31239-548	-
4 1/2"	Casing	33854-129	31239-129	43239-129
4 1/2"	Drill Collar w/ Lift Plug	33854-215	31239-215	43239-215
4 1/2"	Drill Collar w/ Zip Lift Recess	33854-554	31239-554	-
4 1/2"	Plain (NU) Tubing	33854-166	31239-166	43239-166
4 1/2"	Upset (EU) Tubing	33854-167	31239-167	43239-167
4 3/4"	Casing	33854-130	31239-130	43239-130
4 3/4"	Drill Collar w/ Lift Plug	33854-354	31239-354	43239-354
4 3/4"	Drill Collar w/ Zip Lift Recess	33854-435	31239-435	-
5"	Casing	33854-131	31239-131	43239-131
5"	Drill Collar w/ Lift Plug	33854-552	31239-552	43239-552
5 1/4"	Drill Collar w/ Lift Plug	33854-219	31239-219	43239-219
5 1/4"	Drill Collar w/ Zip Lift Recess	33854-179	31239-179	43239-179
5 1/2"	Casing	33854-132	31239-132	43239-132
5 1/2"	Drill Collar w/ Lift Plug	33854-411	31239-411	43239-411
5 1/2"	Drill Collar w/ Zip Lift Recess	33854-180	31239-180	43239-180

# SLX Elevator Bore Codes

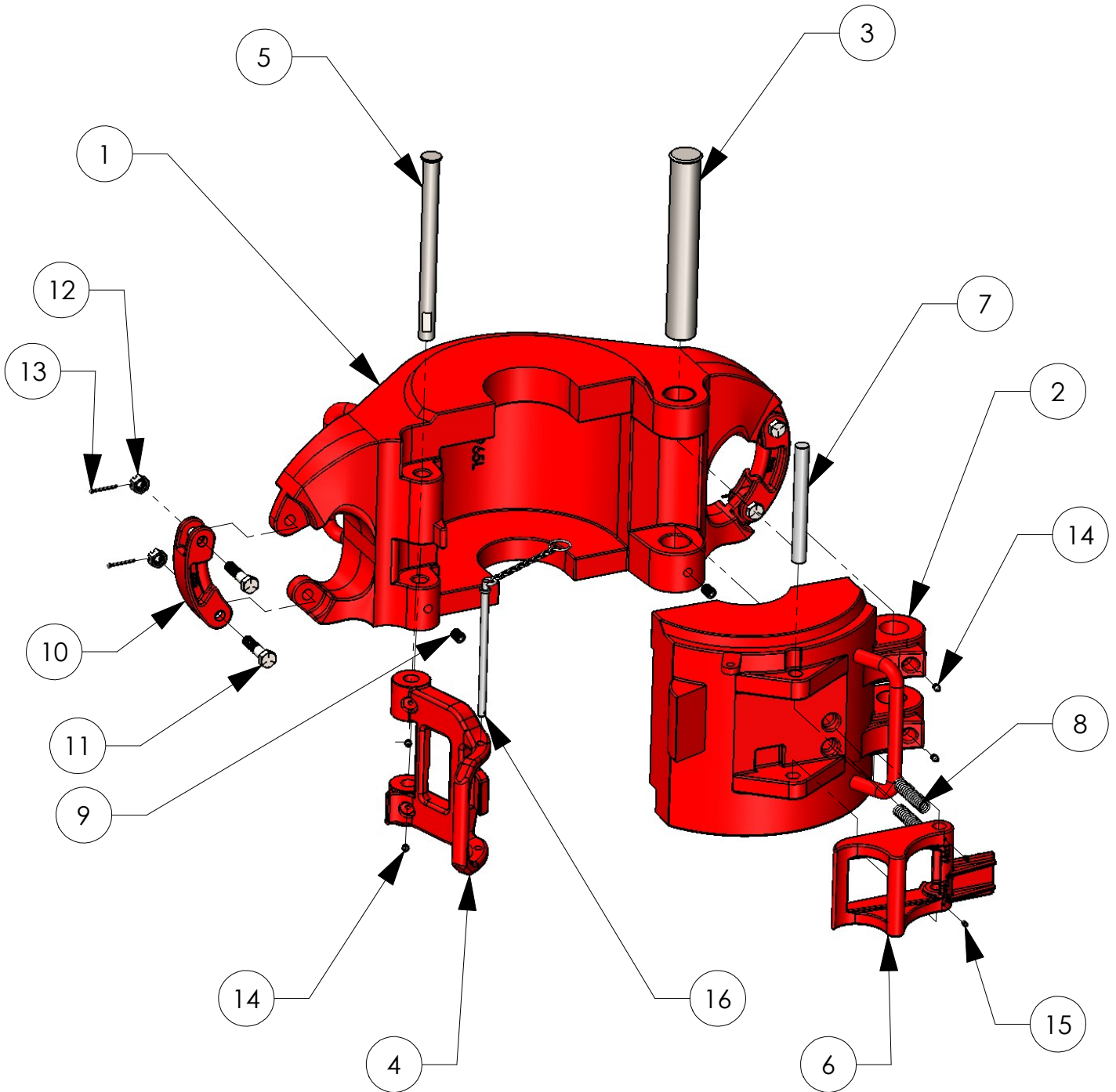
Size (in)	Style	100 Ton	150 Ton	250 Ton
5 3/4"	Casing	33854-133	31239-133	43239-133
5 3/4"	Drill Collar w/ Lift Plug	-	31239-222	43239-222
5 3/4"	Drill Collar w/ Zip Lift Recess	33854-181	31239-181	43239-181
6"	Casing	-	31239-134	43239-134
6"	Drill Collar w/ Lift Plug	-	31239-349	43239-349
6"	Drill Collar w/ Zip Lift Recess	33854-362	31239-362	43239-362
6 1/4"	Drill Collar w/ Lift Plug	-	31239-348	43239-348
6 1/4"	Drill Collar w/ Zip Lift Recess	33854-337	31239-337	43239-337
6 3/8"	Drill Collar w/ Lift Plug	-	31239-331	43239-331
6 1/2"	Drill Collar w/ Lift Plug	-	31239-332	43239-332
6 1/2"	Drill Collar w/ Zip Lift Recess	-	31239-373	43239-373
6 5/8"	Casing	-	31239-135	43239-135
6 3/4"	Drill Collar w/ Lift Plug	-	31239-338	43239-338
6 3/4"	Drill Collar w/ Zip Lift Recess	-	31239-387	43239-387
7"	Casing	-	31239-136	43239-136
7"	Drill Collar w/ Lift Plug	-	31239-372	43239-372
7"	Drill Collar w/ Zip Lift Recess	-	31239-361	43239-361
7 1/4"	Drill Collar w/ Lift Plug	-	31239-335	43239-335
7 1/4"	Drill Collar w/ Zip Lift Recess	-	31239-357	43239-357
7 1/2"	Drill Collar w/ Lift Plug	-	31239-137	43239-137
7 1/2"	Drill Collar w/ Zip Lift Recess	-	31239-188	43239-188
7 5/8"	Casing	-	31239-137	43239-137
7 3/4"	Casing	-	31239-705	43239-705
7 3/4"	Drill Collar w/ Lift Plug	-	31239-550	43239-550
7 3/4"	Drill Collar w/ Zip Lift Recess	-	31239-339	43239-339
8"	Casing	-	31239-757	43239-757
8"	Drill Collar w/ Lift Plug	-	31239-334	43239-334
8"	Drill Collar w/ Zip Lift Recess	-	31239-336	43239-336
8 1/4"	Drill Collar w/ Lift Plug	-	31239-347	43239-347
8 1/4"	Drill Collar w/ Zip Lift Recess	-	31239-422	43239-422
8 3/8"	Casing	-	31239-759	43239-759
8 1/2"	Casing	-	31239-646	43239-646
8 1/2"	Drill Collar w/ Lift Plug	-	31239-580	43239-580
8 1/2"	Drill Collar w/ Zip Lift Recess	-	31239-426	43239-426
8 5/8"	Casing	-	31239-139	43239-139
9"	Drill Collar w/ Zip Lift Recess	-	31239-427	43239-427
9 1/4"	Drill Collar w/ Lift Plug	-	-	43950-227
9 1/2"	Casing	-	33950-747	43950-747
9 1/2"	Drill Collar w/ Lift Plug	-	33950-346	43950-346

# SLX Elevator Bore Codes

Size (in)	Style	100 Ton	150 Ton	250 Ton
9 5/8"	Casing	-	33950-141	43950-141
9 5/8"	Drill Collar w/ Lift Plug	-	33950-479	43950-479
9 7/8"	Casing	-	33950-649	43950-649
10"	Casing	-	33950-831	43950-831
10"	Drill Collar w/ Lift Plug	-	33950-228	43950-228
10"	Drill Collar w/ Zip Lift Recess	-	-	43950-195
10 1/8"	Casing	-	33950-846	43950-846
10 1/4"	Casing	-	33950-808	43950-808
10 1/2"	Drill Collar w/ Lift Plug	-	33950-229	43950-229
10 3/4"	Casing	-	33950-142	43950-142
10 3/4"	Drill Collar w/ Zip Lift Recess	-	33950-527	43950-527
11"	Drill Collar w/ Lift Plug	-	33982-230	43982-230
11"	Drill Collar w/ Zip Lift Recess	-	33950-419	43950-419
11 1/4"	Drill Collar w/ Zip Lift Recess	-	33950-196	43950-196
11 3/4"	Casing	-	33982-143	43982-143
11 3/4"	Drill Collar w/ Lift Plug	-	33982-621	43982-621
12 3/4"	Casing	-	33982-850	43982-850
12 7/8"	Casing	-	33982-676	43982-676
13 3/8"	Casing	-	33982-144	43982-144
13 5/8"	Casing	-	33982-596	43982-596
14"	Casing	-	33632-690	43982-690
14"	Drill Collar w/ Lift Plug	-	33632-679	43982-679
16"	Casing	-	33632-145	43632-145
16 3/4"	Casing	-	33632-175	43632-175
18"	Casing	-	33632-723	43632-723
18 1/2"	Casing	-	33632-852	43632-852
18 5/8"	Casing	-	33632-146	43632-146
20"	Casing	-	33632-147	43632-147
20 3/4"	Casing	-	-	43632-925
21 1/2"	Casing	-	-	43632-148
22"	Casing	-	-	43632-688
22 1/2"	Casing	-	-	43632-876
24"	Casing	-	33175-630	43632-630
24 1/2"	Casing	-	33175-149	43175-149
26"	Casing	-	33175-650	43175-650
27"	Casing	-	33175-692	43175-692
28"	Casing	-	33175-693	43175-693
30"	Casing	-	33175-644	43175-644
36"	Casing	-	33180-660	43180-660

# BVM SX ELEVATOR

BVM's SX Elevators are Side Door Elevators and used for handling casing ranging in size from 5 1/2" to 20" and have a load rating of 350 to 750 tons. BVM elevators are made from alloy steel, heat treated, load tested and magnetic particle inspected. All steel specifications are certified.



## BVM CORPORATION

307 MAGNOLIA BUSINESS PARK DR.  
MAGNOLIA, TX 77354; PHONE: 346-296-5501  
www.bvmcorp.com; sales@bvmcorp.com

# BVM SX ELEVATOR

ITEM NO.	DESCRIPTION	QTY	350 Ton	350 Ton	500 Ton	500 Ton	750 Ton
			5 1/2" - 14"	16" - 20"	6 5/8" - 14"	16"- 20"	7 5/8" - 13 3/8"
1	BODY	1	29965L	29966L	29964L	30729L	46950L
2	DOOR	1	29965R	29966R	29964R	30729R	46950R
3	HINGE PIN	1	29956	29956	29956	29956	38115
4	LATCH	1	29945	29945	29945	29945	38130
5	LATCH PIN	1	29951	29951	29951	29951	38125
6	LATCH LOCK	1	6021	6021	6021	6021	6021
7	LATCH LOCK PIN	1	6027	6027	6027	6027	6027
8	LATCH SPRING	1	30657	30657	30657	30657	30657
9	SET SCREW	1	939565-143	939565-143	939565-143	939565-143	7008F-06
10	LINK BLOCK	2	9519	9519	9519	9519	63009-1
11	LINK BLOCK BOLT	2	8145	8145	8145	8145	79805 (X2)
12	LINK BLOCK NUT	2	6812C-00-5	6812C-00-5	6812C-00-5	6812C-00-5	6812C-00-5 (X2)
13	COTTER PIN	2	30AB0-14-0	30AB0-14-0	30AB0-14-0	30AB0-14-0	30040-24-0 (X2)
14	GREASE FITTING	1	940308-1	940308-1	940308-1	940308-1	940308-1
15	GREASE FITTING	2	992073-1	992073-1	992073-1	992073-1	992073-1
16	PIN & CHAIN	1	10550	10550	10550	10550	10550
17	LOWER LINK BLOCK BOLT	2	-	-	-	-	38116
18	SET SCREW	4	-	-	-	-	7006F-06
19	COTTER PIN	2	-	-	-	-	30AB0-14-0



## SX Elevator Bore Codes

Size (in)	Style	350 Ton	500 Ton	750 Ton
5 1/2"	Casing	29965-132	-	-
5 1/2"	Drill Collar w/ Lift Plug	29965-411	-	-
5 3/4"	Casing	29965-133	-	-
5 3/4"	Drill Collar w/ Lift Plug	29965-222	-	-
6"	Casing	29965-134	29964-134	-
6"	Drill Collar w/ Lift Plug	29965-349	29964-349	-
6 1/4"	Drill Collar w/ Lift Plug	29965-348	29964-348	-
6 1/4"	Drill Collar w/ Zip Lift Recess	29965-337	-	-
6 3/8"	Drill Collar w/ Lift Plug	29965-331	29964-331	-
6 1/2"	Drill Collar w/ Lift Plug	29965-332	29964-332	-
6 1/2"	Drill Collar w/ Zip Lift Recess	29965-373	-	-
6 5/8"	Casing	29965-135	29964-135	-
6 3/4"	Drill Collar w/ Lift Plug	29965-338	29964-338	-
6 3/4"	Drill Collar w/ Zip Lift Recess	29965-387	29964-387	-
7"	Casing	29965-136	29964-136	-
7"	Drill Collar w/ Lift Plug	29965-372	29964-372	-
7"	Drill Collar w/ Zip Lift Recess	29965-361	29964-361	-
7 1/4"	Drill Collar w/ Lift Plug	29965-335	29964-335	-
7 1/4"	Drill Collar w/ Zip Lift Recess	29965-357	29964-357	-
7 1/2"	Drill Collar w/ Lift Plug	29965-137	29964-137	-
7 1/2"	Drill Collar w/ Zip Lift Recess	29965-188	29964-188	-
7 5/8"	Casing	29965-137	29964-137	46950-137
7 3/4"	Casing	29965-705	29964-705	46950-705
7 3/4"	Drill Collar w/ Lift Plug	29965-550	29964-550	46950-550
7 3/4"	Drill Collar w/ Zip Lift Recess	29965-339	29964-339	-
8"	Casing	29965-757	29964-757	46950-757
8"	Drill Collar w/ Lift Plug	29965-334	29964-334	46950-334
8"	Drill Collar w/ Zip Lift Recess	29965-336	29964-336	-
8 1/4"	Drill Collar w/ Lift Plug	29965-347	29964-347	46950-347
8 1/4"	Drill Collar w/ Zip Lift Recess	29965-422	29964-422	-
8 3/8"	Casing	29965-759	29964-759	46950-759
8 1/2"	Casing	29965-646	29964-646	46950-646
8 1/2"	Drill Collar w/ Lift Plug	29965-580	29964-580	46950-580
8 1/2"	Drill Collar w/ Zip Lift Recess	29965-426	29964-426	46950-426
8 5/8"	Casing	29965-139	29964-139	46950-139
8 3/4"	Drill Collar w/ Lift Plug	29965-226	29964-226	46950-226
9"	Casing	29965-140	29964-140	46950-140
9"	Drill Collar w/ Lift Plug	29965-356	29964-356	46950-356
9"	Drill Collar w/ Zip Lift Recess	29965-427	29964-427	46950-427
9 1/4"	Drill Collar w/ Lift Plug	29965-227	29964-227	46950-227



## SX Elevator Bore Codes

Size (in)	Style	350 Ton	500 Ton	750 Ton
9 1/2"	Casing	29965-747	29964-747	46950-747
9 1/2"	Drill Collar w/ Lift Plug	29965-346	29964-346	46950-346
9 1/2"	Drill Collar w/ Zip Lift Recess	29965-370	29964-370	46950-370
9 5/8"	Casing	29965-141	29964-141	46950-141
9 5/8"	Drill Collar w/ Lift Plug	29965-479	29964-479	46950-479
9 3/4"	Drill Collar w/ Zip Lift Recess	29965-367	29964-367	46950-367
9 7/8"	Casing	29965-649	29964-649	46950-649
10"	Casing	29965-831	29964-831	46950-831
10"	Drill Collar w/ Lift Plug	29965-228	29964-228	46950-228
10"	Drill Collar w/ Zip Lift Recess	29965-195	29964-195	46950-195
10 1/8"	Casing	29965-846	29964-846	46950-846
10 1/4"	Casing	29965-808	29964-808	46950-808
10 1/2"	Drill Collar w/ Lift Plug	29965-229	29964-229	46950-229
10 3/4"	Casing	29965-142	29964-142	46950-142
10 3/4"	Drill Collar w/ Zip Lift Recess	29965-527	29964-527	46950-527
11"	Drill Collar w/ Lift Plug	29965-230	29964-230	46950-230
11"	Drill Collar w/ Zip Lift Recess	29965-419	29964-419	46950-419
11 1/4"	Drill Collar w/ Zip Lift Recess	29965-196	29964-196	46950-196
11 3/4"	Casing	29965-143	29964-143	46950-143
11 3/4"	Drill Collar w/ Lift Plug	29965-621	29964-621	46950-621
12 3/4"	Casing	29965-850	29964-850	46950-850
12 7/8"	Casing	29965-676	29964-676	46950-676
13 3/8"	Casing	29965-144	29964-144	46950-144
13 5/8"	Casing	29965-596	29964-596	-
14"	Casing	29965-690	29964-690	-
14"	Drill Collar w/ Lift Plug	29965-679	29964-679	-
16"	Casing	29966-145	30729-145	-
16 3/4"	Casing	29966-175	30729-175	-
18"	Casing	29966-723	30729-723	-
18 1/2"	Casing	29966-852	30729-852	-
18 5/8"	Casing	29966-146	30729-146	-
20"	Casing	29966-147	30729-147	-